

2022/2023

---

# FIS ALPINE

---

ENGLISH



[atomic.com](https://www.atomic.com)

# BORN ON THE RACE COURSE.

All our Redster equipment traces its DNA to World Cup competition. Designed with input from skiers like Mikaela Shiffrin, Sofia Goggia, Marco Schwarz, and Aleksander Kilde, no detail is overlooked. When you step into a pair of Atomic Redster skis and arc the perfect turn in fresh morning corduroy, you become part of our sixty-five years of skiing heritage. You enter the tradition of meticulous preparation and winters spent perpetually seeking your best.



**ALEKSANDER A. KILDE**

*"With the new Revoshock system, I feel like the stability of the ski has improved a lot, which makes it easier for me to ski the line I want."*



**MARCO SCHWARZ**

*"Even if the course conditions are not 100% perfect, thanks to the new Redster G9 Revoshock, I can push through my turns fully because the system absorbs impacts so well!"*

**MIKAELA SHIFFRIN**

*"The Redster G9 Revoshock provides the perfect combination of control, stability, and acceleration. These are the main things I need from a ski to perform on the biggest stage."*



**SOFIA GOGGIA**

*"Redster Revoshock helps me stabilize the ski during the entire turn and pushes me forward into the next one. It does that by reducing vibration and increasing stability. :)"*



# FROM RACE COURSE TO THE SKISHOP

The development of a new ski technologies starts with input from the world's best skiers. What is the journey from the first prototypes of a new ski to FIS model development on to the final product for the consumer? What does it take for an updated design or technology like the new Revoshock modules to be applied to a production ski?



## ALL OUR RACERS...

...from Marco Schwarz to Mikaela Shiffrin are obsessed with finding every advantage, physically and technically. The careful tuning of their equipment is essential. Professional skiers have up to a hundred pairs of skis to cover all disciplines. An army of service technicians are constantly testing, tweaking, and adjusting a range of prototypes until the demands of every athlete are met. The ski and ski/boot interface influences the responsiveness of the ski and determines if the athlete can stand at the start gate in total confidence. Twelve months a year, the team around the Atomic Race Manager, Christian Höflehner, works to test and improve new products with the athletes. New skis and prototypes are tested, then fine-tuned with the athletes. At the end of this process, only one or two of around 15 original prototypes remain, which are then further refined. Conditions for such tests must be as realistic as possible, the racers are constantly testing during the racing season.

## PROOF OF CONCEPT

In the 2020/21 season, various athletes have already raced and won on the new Redster G9 Revoshock. These athletes included Aleksander Aamodt Kilde, Mikaela Shiffrin, Marco Schwarz, and Lucas Braathen, who won the season-opening race 2020/21 in Sölden on this ski. Since then, the new Redster models have also been raced at other competition levels to great success. This success has continued into the 2021/22 season.





# PRO CENTER

## THE ULTIMATE SHOP FOR RACERS



### SKI DEVELOPMENT

Once the construction and technology have been proven at the highest level, the ski goes into production for the Atomic FIS collection. The findings from empirical tests, and feedback from the athletes go straight to the R&D department who produce the blueprint for the FIS production ski. The skis are produced according to this blueprint and the corresponding technical features meet our highest manufacturing standards.

### OUR PRO CENTER PARTNERS

When every fraction of a second counts, you need the right partner for exceptional service. Our Atomic Pro Center partners have years of experience with athletes and share this knowledge and love of the skiing with all fans of speed. From junior racers to World Cup athletes, our Atomic Pro Center experts will advise you and tailor the equipment perfectly to your demands. At every Atomic Pro Center, we focus on individual consultation and exceptional on-site service.



### ATOMIC PRO CENTERS

Atomic Pro Centers are our competence centers created exclusively for FIS members and race enthusiasts, from junior racers to World Cup competitors. You'll quickly discover it's not just the gear that makes these places special. Our experienced alpine race technicians will work with you to find the perfect ski set-up.

Our main Atomic Pro Center is located at the Atomic global headquarters in Altenmarkt, on the same site as our ski production and R&D facilities. There is also an Atomic Pro Center at SNØ in Oslo, at Equipion in Moscow and 30 Atomic Pro Center Partners worldwide.



### RACING SERVICES

Experts with World Cup experience will share our top-end racing equipment with you and build your own individual set-up. It enables racers on the way up to experience the unique service enjoyed by our top Atomic stars – from having their skis tuned in our Race Department with Wintersteiger equipment to having their boots professional fitted by our Atomic race technicians.



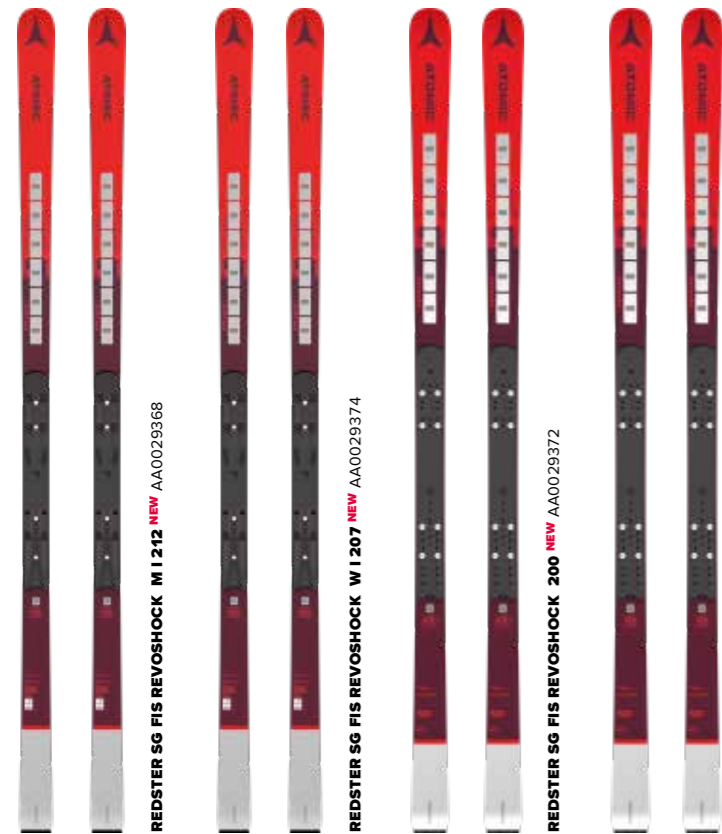
### APPOINTMENT

Racing services are available in Altenmarkt and Oslo, and any of our Pro Center partners in your region. To make sure we have enough time for individual service, please book an appointment in advance.

Please find our Atomic Pro Center and Pro Center Partners listed on the back page of the catalog.

# SKIS TECHNICAL SPECIFICATIONS

SG



G9



S9



PRODUCT	ART. NO.	BINDINGS	LENGTH (cm)	RADIUS (m)	SIDE CUT TIP (mm)	SIDE CUT WAIST (mm)	SIDE CUT TAIL (mm)	FEATURES	PRICES
<b>REDSTER SG FIS REVOSHOCK M I 212</b>	AA0029368	-	212	45	95	65	81	Revoshock, Full Sidewall, Ultra Power Woodcore, Structured Topsheet, World Cup Base Finish, Ultra TI Powered, Icon Interface, Side Edge Angle: 87°, Base Edge Angle: 1.0°	
<b>REDSTER SG FIS REVOSHOCK W I 207</b>	AA0029374	-	207	40	95	65	81.2	Revoshock, Full Sidewall, Ultra Power Woodcore, Structured Topsheet, World Cup Base Finish, Ultra TI Powered, Icon Interface, Side Edge Angle: 87°, Base Edge Angle: 1.0°	
<b>REDSTER SG FIS REVOSHOCK 200</b>	AA0029372	-	200	35	96.5	65	81.1	Revoshock, Full Sidewall, Ultra Power Woodcore, Structured Topsheet, World Cup Base Finish, Ultra TI Powered, Flex Interface, Side Edge Angle: 87°, Base Edge Angle: 1.0°	
<b>REDSTER SG FIS REVOSHOCK</b>	AA0028768	-	185 192	30 35	98.5 98	65	82 82.4	Revoshock, Full Sidewall, Ultra Power Woodcore, Structured Topsheet, World Cup Base Finish, Ultra TI Powered, Active Race Interface, Side Edge Angle: 87°, Base Edge Angle: 1.0°	
<b>REDSTER G9 FIS REVOSHOCK M I 193</b>	AA0029356	-	193	30	101.5	65	83.8	Revoshock, Full Sidewall, Ultra Power Woodcore, Structured Topsheet, World Cup Base Finish, Ultra TI Powered, Icon Interface, Side Edge Angle: 87°, Base Edge Angle: 0.5°	
<b>REDSTER G9 FIS REVOSHOCK W I 188</b>	AA0029354	-	188	30	101.5	65	81.2	Revoshock, Full Sidewall, Ultra Power Woodcore, Structured Topsheet, World Cup Base Finish, Ultra TI Powered, Icon Interface, Side Edge Angle: 87°, Base Edge Angle: 0.5°	
<b>REDSTER G9 FIS REVOSHOCK W 188</b>	AA0028736	-	188	30	101.5	65	81.2	Revoshock, Full Sidewall, Ultra Power Woodcore, Structured Topsheet, World Cup Base Finish, Ultra TI Powered, Flex Interface, Side Edge Angle: 87°, Base Edge Angle: 0.8°	

PRODUCT	ART. NO.	BINDINGS	LENGTH (cm)	RADIUS (m)	SIDE CUT TIP (mm)	SIDE CUT WAIST (mm)	SIDE CUT TAIL (mm)	FEATURES	PRICES
<b>REDSTER G9 FIS REVOSHOCK W 183</b>	AA0028738	-	183	30	100	65	80.5	Revoshock, Full Sidewall, Ultra Power Woodcore, Structured Topsheet, World Cup Base Finish, Ultra TI Powered, Flex Interface, Side Edge Angle: 87°, Base Edge Angle: 0.8°	
<b>REDSTER G9 RS REVOSHOCK I 190</b>	AA0029360	-	190	27.5	104	68	89	Revoshock, Full Sidewall, Ultra Power Woodcore, Structured Topsheet, World Cup Base Finish, Ultra TI Powered, Icon Interface, Side Edge Angle: 87°, Base Edge Angle: 0.8°	
<b>REDSTER G9 RS REVOSHOCK I 183</b>	AA0029362	-	183	24	105	67.5	89	Revoshock, Full Sidewall, Ultra Power Woodcore, Structured Topsheet, World Cup Base Finish, Ultra TI Powered, Icon Interface, Side Edge Angle: 87°, Base Edge Angle: 0.8°	
<b>REDSTER G9 RS REVOSHOCK 183</b>	AA0029572	-	183	24	105	67.5	89	Revoshock, Full Sidewall, Ultra Power Woodcore, Structured Topsheet, World Cup Base Finish, Ultra TI Powered, Active Race Interface, Side Edge Angle: 87°, Base Edge Angle: 0.8°	
<b>REDSTER G9 RS REVOSHOCK 176</b>	AA0029412	-	176	21	106.5	67	90	Revoshock, Full Sidewall, Ultra Power Woodcore, Structured Topsheet, World Cup Base Finish, Ultra TI Powered, Active Race Interface, Side Edge Angle: 87°, Base Edge Angle: 0.8°	
<b>REDSTER S9 FIS M I 165</b>	AA0029380	-	165	12.6	115.9	65.3	101.3	Full Sidewall, Ultra Power Woodcore, Structured Topsheet, World Cup Base Finish, Ultra TI Powered, Icon Interface, Side Edge Angle: 87°, Base Edge Angle: 0.5°	
<b>REDSTER S9 FIS M 165</b>	AA0029376	-	165	12.6	115.9	65.3	101.3	Full Sidewall, Ultra Power Woodcore, Structured Topsheet, World Cup Base Finish, Ultra TI Powered, Side Edge Angle: 87°, Base Edge Angle: 0.5°	

SKIS TECHNICAL SPECIFICATIONS

SL

JR GS



PRODUCT	ART. NO.	BINDINGS	LENGTH (cm)	RADIUS (m)	SIDE CUT TIP (mm)	SIDE CUT WAIST (mm)	SIDE CUT TAIL (mm)	FEATURES	PRICES
<b>REDSTER S9 FIS W I 157</b>	AA0029384	-	157	12.7	114.5	66.3	99.5	Full Sidewall, Ultra Power Woodcore, Structured Topsheet, World Cup Base Finish, Ultra TI Powered, Icon Interface, Side Edge Angle: 87°, Base Edge Angle: 0.5°	
<b>REDSTER S9 FIS W 157</b>	AA0028730	-	157	12.7	114.5	66.3	99.5	Full Sidewall, Ultra Power Woodcore, Structured Topsheet, World Cup Base Finish, Ultra TI Powered, Active Race Interface, Side Edge Angle: 87°, Base Edge Angle: 0.5°	
<b>REDSTER S9 FIS 155</b>	AA0028732	-	155	12.1	112.9	65	97.5	Full Sidewall, Ultra Power Woodcore, Structured Topsheet, World Cup Base Finish, Ultra TI Powered, Active Race Interface, Side Edge Angle: 87°, Base Edge Angle: 0.5°	
<b>REDSTER G9 FIS REVOSHOCK S</b>	AA0028756	-	187	26	103	65	82.4	Revoshock S, Full Sidewall, Ultra Power Woodcore, Structured Topsheet, World Cup Base Finish, Ultra TI Powered, Active Race Interface, Side Edge Angle: 87°, Base Edge Angle: 0.8°	
<b>REDSTER G9 FIS REVOSHOCK S</b>	AA0028758	-	173 180	20 24	105 104	65 65	87.5 85.5	Revoshock S, Full Sidewall, Ultra Power Woodcore, Structured Topsheet, World Cup Base Finish, Ultra TI Powered, Active Race Interface, Side Edge Angle: 87°, Base Edge Angle: 0.8°	
<b>REDSTER G9 FIS REVOSHOCK S J</b>	AASS03038 AASS02708	X 14 GW X 12 GW	152 159 166	17 17.3 18.1	102.5 104.5 106	65 65 65	84.5 86.5 88	Revoshock S, Dura Cap Sidewall, Power Woodcore, Structured Topsheet, World Cup Base Finish, Ultra TI Powered, Flex Interface, Side Edge Angle: 87°, Base Edge Angle: 0.8°	
<b>REDSTER G9 FIS REVOSHOCK S J-RP2</b>	AA0029364 AAST01852 AAST01856 AAST01854	- COLT 12 COLT 10 COLT 7 C	152 159 166	17 17.3 18.1	102.5 104.5 106	65 65 65	84.5 86.5 88	Revoshock S, Dura Cap Sidewall, Power Woodcore, Structured Topsheet, World Cup Base Finish, TI Powered, Junior Race Interface, Side Edge Angle: 87°, Base Edge Angle: 0.8°	

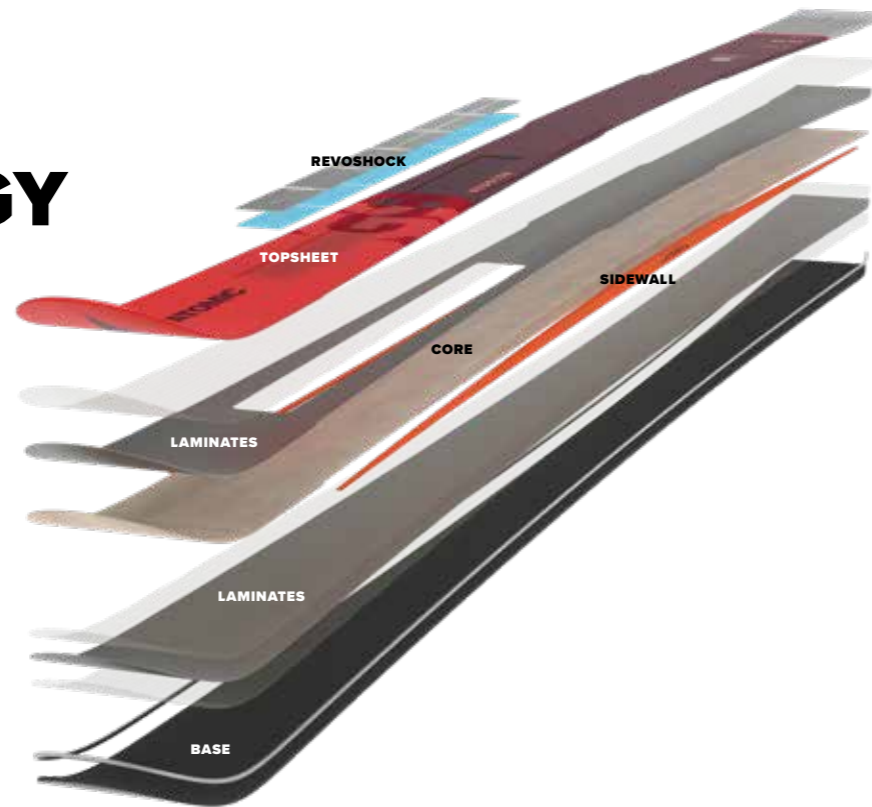
JR SL

JR ALLROUND



PRODUCT	ART. NO.	BINDINGS	LENGTH (cm)	RADIUS (m)	SIDE CUT TIP (mm)	SIDE CUT WAIST (mm)	SIDE CUT TAIL (mm)	FEATURES	PRICES
<b>REDSTER G9 FIS J-RP2</b>	AA0028764 AAST01544 AAST01546	- COLT 10 COLT 7 C	124 131 138 145	13.5 14 14.5 15	96 98 100 102	65 65 65 65	79 81 83 85	Dura Cap Sidewall, Power Woodcore, Structured Topsheet, World Cup Base Finish, TI Powered, Junior Race Interface, Side Edge Angle: 87°, Base Edge Angle: 0.8°	
<b>REDSTER S9 FIS</b>	AA0029310	-	152	11.6	115.5	65	96.5	Dura Cap Sidewall, Ultra Power Woodcore, Structured Topsheet, World Cup Base Finish, Ultra TI Powered, Active Race Interface, Side Edge Angle: 87°, Base Edge Angle: 0.8°	
<b>REDSTER S9 FIS J-RP2</b>	AA0028752 AAST01552 AAST01554	- COLT 12 COLT 10	145 152	11 11.6	112.5 115.5	65 65	94 96.5	Dura Cap Sidewall, Ultra Power Woodcore, Structured Topsheet, World Cup Base Finish, TI Powered, Junior Race Interface, Side Edge Angle: 87°, Base Edge Angle: 0.8°	
<b>REDSTER S9 FIS J-RP2</b>	AA0028754 AAST01548 AAST01550	- COLT 10 COLT 7 C	124 131 138	8.9 9.7 10.4	105.5 107 108.5	65 65 65	88 89.5 91	Dura Cap Sidewall, Power Woodcore, Structured Topsheet, World Cup Base Finish, TI Powered, Junior Race Interface, Side Edge Angle: 87°, Base Edge Angle: 0.8°	
<b>REDSTER J9 FIS J-RP2</b>	AA0028770 AAST01726	- COLT 7 C	116	9	104	64	84.5	Dura Cap, Power Woodcore, Glossy Topsheet, World Cup Base Finish, TI Powered, Junior Race Interface, Side Edge Angle: 87°, Base Edge Angle: 0.8°	
<b>REDSTER J9 RS J-RP2</b>	AA0028772 AAST01536 AAST01534	- COLT 10 COLT 7 C	120 130 140 150 160	9.3 11 12.5 14 16	102 103 104 105 106	65 65 65 65 65	86.5 87.5 88.5 89.5 90.5	Dura Cap Sidewall, Light Woodcore, Densolite Core, Glossy Topsheet, Junior Race Interface, Side Edge Angle: 87°, Base Edge Angle: 1.0°	

# REDSTER TECHNOLOGY

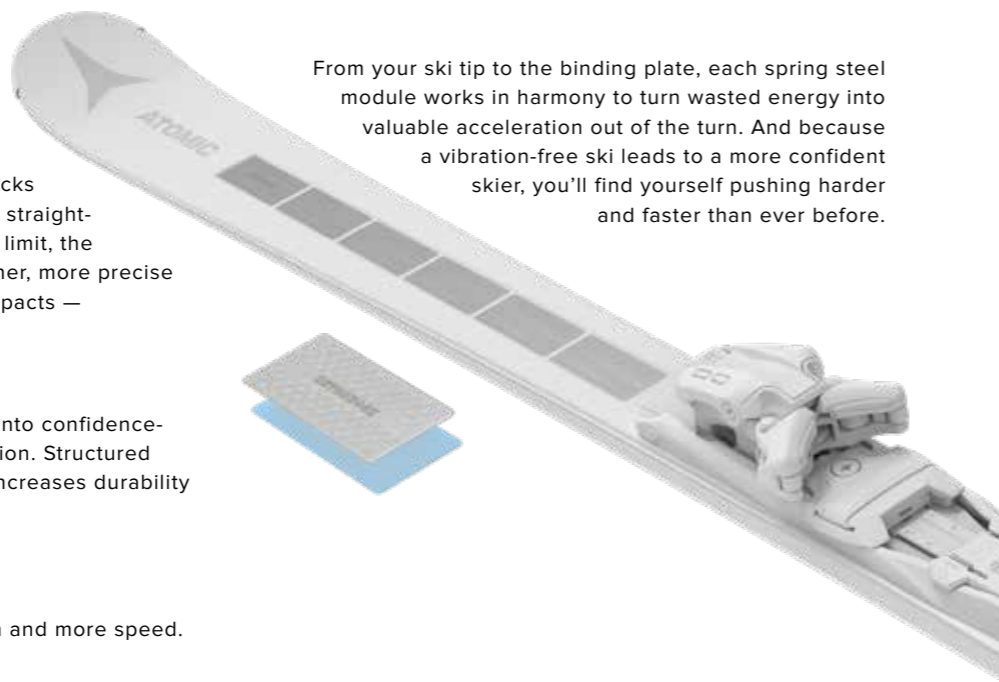


## CONSTRUCTION

### REVOSHOCK S

Utilizing a series of spring steel modules each encased in impact absorbing elastomer, the revolutionary Revoshock S technology acts like a built-in suspension system for your skis to block distracting shocks before they reach your feet. Whether you're straight-lining groomers or making fast turns at your limit, the race-proven Revoshock S provides a smoother, more precise run. But Revoshock S doesn't just absorb impacts — it rebounds them.

From your ski tip to the binding plate, each spring steel module works in harmony to turn wasted energy into valuable acceleration out of the turn. And because a vibration-free ski leads to a more confident skier, you'll find yourself pushing harder and faster than ever before.



### TOPSHEET

Redster Revoshock turns unwanted shocks into confidence-building stability and unparalleled acceleration. Structured topsheet: A structured topsheet massively increases durability and gives a high quality finish.

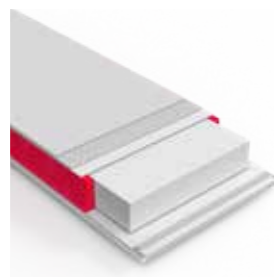
### BASE

World Cup Base Finish  
World Cup-level grinding means less friction and more speed.

## SIDEWALLS

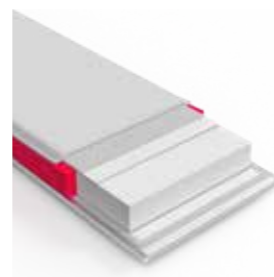
### FULL SIDEWALL

Full sidewall runs across the full length of the ski for precise steering.



### DURA CAP SIDEWALL

Sidewall from base to top sheet, for controlled power transmission and great edge grip. The rounded shape of the Dura Cap is a fantastic durability feature as it picks up fewer dents and dings.



## CORE

### ULTRA POWER WOODCORE

Made from strong beech and lightweight poplar – for supreme running stability and agility in our racing skis.



### POWER WOODCORE

A sporty, dynamic ash and poplar woodcore that adds a ton of stability and dampens vibrations at speed.



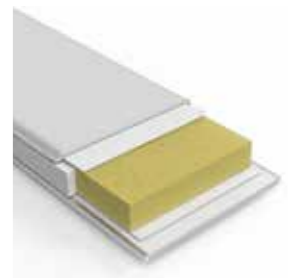
### LIGHT WOODCORE

Made from Poplar wood, this core optimizes the ski's weight without sacrificing any shock absorption or stability.



### DENSOLITE CORE

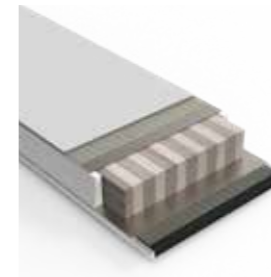
A foam core that's agile and dampens vibrations – for effortless skiing.



## LAMINATE

### ULTRA TI POWERED

Our World Cup, athlete-proven technology Ultra Titanium Powered with updated double bonding is a Titanal laminate that runs from sidewall to sidewall adding stability, torsional rigidity and edge grip.



### TI POWERED

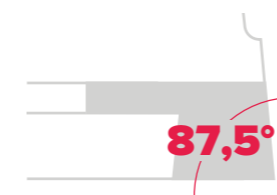
A Titanal layer above and below the core creates supreme shock absorption, strong running stability and high torsional flex.



## EDGE ANGLES

### SIDE EDGE ANGLE

Precisely tuned edges are an important part of ski performance. A dull edge cannot penetrate the snow surface and will skid through a turn. An edge that is too sharp will grab and catch the snow surface creating unstable performance. Our skis are prepared with a side edge angle of 87.0° for more intuitive handling, easier skiing and better grip on hard snow and ice.



### BASE EDGE ANGLE

All skis from our factory are delivered with steel edges that have been carefully machined with a precise base edge bevel for specific performance characteristics. For our FIS skis we're using base edge angles from 0.5° (SL) to 0.8° (GS and JR) and 1.0° (SG and DH). They lightly lift the ski edges off the snow for easy turning while maintaining excellent edge grip and aggressive tracking throughout the turn.



ICON 30

# ICON



### Immediate power

Delivering immediate power while allowing for more reactivity and response throughout the entire ski, Centralized Power Transfer enables the racer to be in better control of the ski by strategically placing the binding interface directly under the boot to centralize and optimize power transmission.

### Built to win

A proven podium winner on the World Cup circuit, Icon has been adopted by some of the fastest skiers on the mountain. Built to handle the toughest race course conditions, Icon provides the highest level of performance without negatively influencing tolerance or rebound.

### The future of race

One binding for all racing disciplines, Icon has been meticulously engineered to meet the constantly evolving conditions in top-level racing. Directing every ounce of energy immediately to the ski, Icon provides superior performance, agility and durability on hard and icy surfaces.

## BINDINGS TECHNICAL SPECIFICATIONS

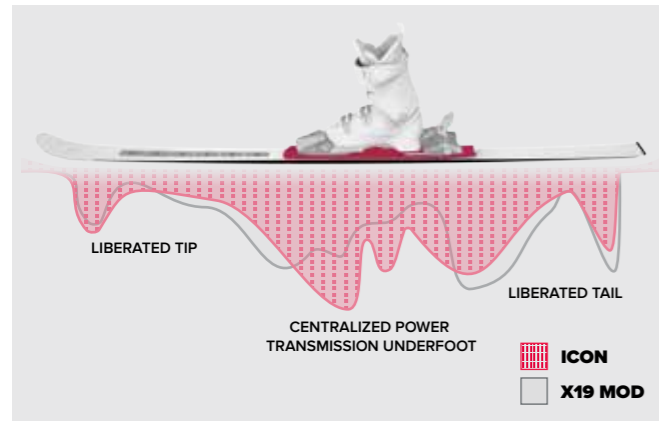


PRODUCT	ART. NO. / COLOR	DIN SCALE	RECOM. SKIER WEIGHT	ADJUSTM. RANGE (mm)	BRAKE WIDTH	WEIGHT (per Bind.)	BINDING / BOOT COMP.	FEATURES	PRICES
<b>ICON 30</b>	AD5002208 Red / Black	20-30	>95kg >209lbs	262-361	X75	1425g	Alpine A (Adult)	Automatic Toe Adaptation, Locking Brakes, Centralized Power Transfer, Elevated Brakes, Automatic Toe Height Adjustment	
<b>ICON 24</b>	AD5002210 Red / Black	14-24	>95kg >209lbs	262-361	X75	1425g	Alpine A (Adult)	Automatic Toe Adaptation, Locking Brakes, Centralized Power Transfer, Elevated Brakes, Automatic Toe Height Adjustment	
<b>X 16 VAR</b>	AD5001764 Red / Black	8-16	42-120kg 92-264lbs	260-364	B70	1480g	Alpine A (Adult)	Locking Brakes, Full Flex, Variable Positioning (VAR), Elevated Brakes, TÜV certified	
<b>X 12 VAR</b>	AD5001766 Red / Black	4-12	42-120kg 92-264lbs	260-364	B70	1470g	Alpine A (Adult)	Locking Brakes, Full Flex, Variable Positioning (VAR), Elevated Brakes, TÜV certified	
<b>X 14 GW*</b>	AD5002154 Black / Red	6-14	42-120kg 92-264lbs	260-360	W BR	987g	Alpine A (Adult) + GripWalk A (Adult)	Locking Brakes, Full Flex, Performance Toe, Elevated Brakes, Toolless Length Adjustment, Automatic Toe Height Adjustment, TÜV certified	
<b>X 12 GW*</b>	AD5002152 Black / Red	4-12	42-120kg 92-264lbs	260-360	W BR	973g	Alpine A (Adult) + GripWalk A (Adult)	Locking Brakes, Full Flex, Elevated Brakes, Toolless Length Adjustment, Automatic Toe Height Adjustment, TÜV certified	
<b>COLT 12</b>	AD5002054 Red / Black	4-12	42-120kg 92-264lbs	28	B75	1050g	Alpine A (Adult)	Automatic Toe Adaptation, Locking Brakes, Low Profile Chassis, XL Wings, Elevated Brakes, Automatic Toe Height Adjustment, TÜV certified	
<b>COLT 10</b>	AD5002056 Red / Black	3-10	30-107kg 66-235lbs	28	B75	970g	Alpine A (Adult)	Automatic Toe Adaptation, Locking Brakes, Low Profile Chassis, Elevated Brakes, Automatic Toe Height Adjustment, TÜV certified	
<b>COLT 7 C</b>	AD5002186 Red / Black	2-7,5	22-85kg 44-187lbs	28	B75	860g	Alpine C (Child) + GripWalk C (Child)	Automatic Toe Adaptation, Locking Brakes, Light Construction, Race Pedal, Automatic Toe Height Adjustment, TÜV certified	

\* available only in combination with a ski

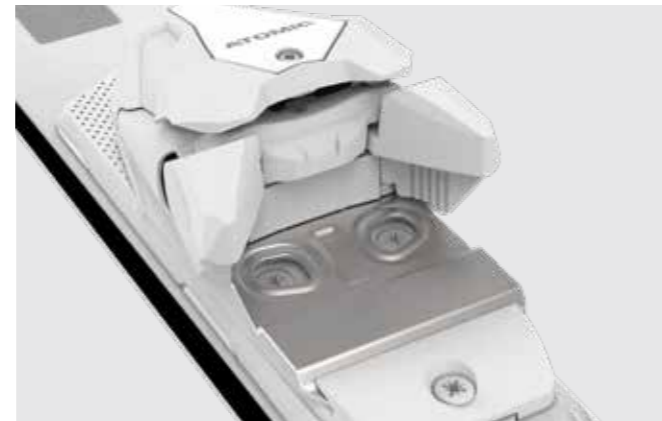
# BINDING TECHNOLOGY

## ICON



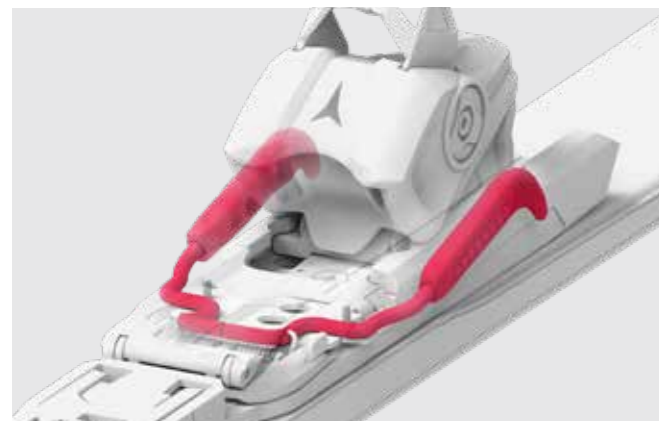
### CENTRALIZED POWER TRANSFER

A wider base plate and race mounting pattern strategically position the binding screws directly under the boot to centralize and optimize power transmission. Delivering immediate power underfoot while allowing for more reactivity and response throughout the entire length of the ski, Centralized Power Transfer enables the racer to be in better control of the ski throughout the turn – in every discipline and type of course setting.



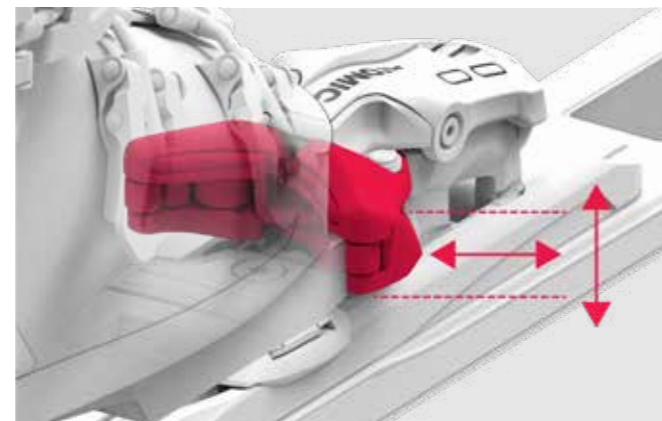
### METAL RACE PEDAL

Designed to deliver the best power transfer from boot to binding, Metal Race Pedal allows the boot to sit directly on the AFD for more direct energy transmission.



### ELEVATED BRAKES

Our Elevated Brakes get up and out of the way, tucked in closer to the heelpiece of your binding, letting you ski more aggressive edge angles with less risk of catching the snow.



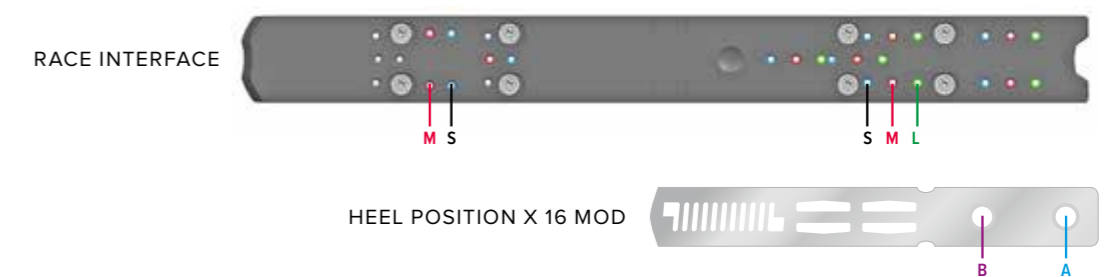
### AUTOMATIC TOE ADAPTION

The toe adapts automatically to your alpine normed boot height and width and ensures constant release values, even on worn out boots.

## MOUNTING GUIDE

### RACE INTERFACE

X 16 VAR / X 12 VAR					
SOLE LENGTH (mm)	POSITION TOE	POSITION HEEL	SOLE LENGTH (mm)	POSITION TOE	POSITION HEEL
264 – 314	S	S	296 – 343	M	M
282 – 314	M	S	314 – 360	M	L



### ICON INTERFACE

#### BOOT SOLE LENGTH:

Mounting information on the plate

ICON 30 / ICON 24					
	POSITION TOE	POSITION HEEL		POSITION TOE	POSITION HEEL
SOLE LENGTH (mm)	262 – 271	262 – 281	SOLE LENGTH (mm)	272 – 341	312 – 321
SOLE LENGTH (mm)	272 – 341	282 – 291	SOLE LENGTH (mm)	272 – 341	322 – 331
SOLE LENGTH (mm)	272 – 341	292 – 301	SOLE LENGTH (mm)	342 – 361	332 – 361
SOLE LENGTH (mm)	272 – 341	302 – 311			

#### ICON INTERFACE GS AND SG



#### ICON INTERFACE SL



### JUNIOR RACE PLATE (J-RP2)

#### BOOT SOLE LENGTH:

Mounting information on the plate for COLT 7 C, COLT 10, COLT 12

- A: > 217mm – 246mm
- B: > 237mm – 266mm
- C: > 256mm – 285mm
- D: > 276mm – 305mm





## BOOTS TECHNICAL SPECIFICATIONS

### REDSTER TI 95MM RACING LAST



PRODUCT	REDSTER TI 150 LIFTED <small>NEW</small>	REDSTER TI 130 <small>NEW</small>	REDSTER TI 110 <small>NEW</small>
ART. NO.	AE5025980	AE5024340	AE5024360
COLOR	Red / Black	Red / Black	Red / Black
SIZE RANGE	22/22.5 - 29/29.5	22/22.5 - 29/29.5	22/22.5 - 29/29.5
SHELL TECHNOLOGY	Progressive Race Shell, +5mm Lifted Sole Height, True Size Mondo 22	Progressive Race Shell, True Size Mondo 22	Progressive Race Shell
CUFF TECHNOLOGY	Power Control, Dual-Sided Cuff Alignment	Power Control, Dual-Sided Cuff Alignment	Power Control, Dual-Sided Cuff Alignment
SHELL / CUFF MATERIAL	PU - H / PU - B	PU / PU	PU / PU
CUFF HEIGHT	Regular Cuff - All Sizes	Regular Cuff - All Sizes	Regular Cuff - All Sizes
LINER MODEL	Mimic World Cup	Mimic World Cup	World Cup
LINER TECHNOLOGY	Mimic, V3 Tongue System, 3D Stretch Toe Box	Mimic, V3 Tongue System, 3D Stretch Toe Box	V3 Tongue System, 3D Stretch Toe Box
POWER STRAP	55mm Professional Dual Strap	55mm Professional Dual Strap	35mm Velcro Strap
CUFF CLOSURE	7000-Series Aluminium Buckles	7000-Series Aluminium Buckles	7000-Series Aluminium Buckles
SHELL CLOSURE	7000-Series Aluminium Buckles	7000-Series Aluminium Buckles	7000-Series Aluminium Buckles
LAST / FIT	95mm Racing Last	95mm Racing Last	95mm Racing Last
FORWARD LEAN SHELL ROTATION	16° (Default)/18°/ 0°	16° (Default)/18°/ 0°	16° (Default)/18°/ 0°
BOOT SOLE	Racing Sole (non-replaceable)	Racing Sole (non-replaceable)	Racing Sole (non-replaceable)
NORM	Not in compliance with Alpine Norm ISO 5355 – Grind before Use!	Alpine Norm ISO 5355	Alpine Norm ISO 5355
WEIGHT / MONDO SIZE	2.350g / 26-26.5	2.350g / 26-26.5	2.350g / 26-26.5
WHAT'S IN THE BOX	Size Adjuster, 2nd Power Control Screw, Liner Laces, Liner Spoiler	Size Adjuster, 2nd Power Control Screw, Liner Laces, Liner Spoiler	Size Adjuster, 2nd Power Control Screw, Liner Laces, Liner Spoiler

#### PRICES

### REDSTER STI 93MM RACING LAST



PRODUCT	REDSTER STI 150 LIFTED <small>NEW</small>	REDSTER STI 130 <small>NEW</small>	REDSTER STI 110 <small>NEW</small>	REDSTER STI 90 LC <small>NEW</small>	REDSTER STI 70 LC <small>NEW</small>
ART. NO.	AE5025960	AE5024380	AE5024400	AE5024420	AE5024440
COLOR	Red / Black	Red / Black	Red / Black	Red / Black	Red / Black
SIZE RANGE	22/22.5 - 27/27.5	22/22.5 - 27/27.5	22/22.5 - 27/27.5	22/22.5 - 27/27.5	22/22.5 - 27/27.5
SHELL TECHNOLOGY	Slim Race Shell, +5mm Lifted Sole Height, True Size Mondo 22	Slim Race Shell, True Size Mondo 22	Slim Race Shell, True Size Mondo 22	Slim Race Shell, True Size Mondo 22	Slim Race Shell, True Size Mondo 22
CUFF TECHNOLOGY	Power Control, Dual-Sided Cuff Alignment	Power Control, Dual-Sided Cuff Alignment	Power Control, Dual-Sided Cuff Alignment	Power Control, Dual-Sided Cuff Alignment	Dual-Sided Cuff Alignment
SHELL / CUFF MATERIAL	PU - H / PU - B	PU / PU	PU / PU	PU / PU	PU / PU
CUFF HEIGHT	Regular Cuff - All Sizes	Regular Cuff - All Sizes	Regular Cuff - All Sizes	Low Cuff - All Sizes	Low Cuff - All Sizes
LINER MODEL	Mimic World Cup	Mimic World Cup	World Cup	World Cup	World Cup
LINER TECHNOLOGY	Mimic, V3 Tongue System, 3D Stretch Toe Box	Mimic, V3 Tongue System, 3D Stretch Toe Box	V3 Tongue System, 3D Stretch Toe Box	V3 Tongue System, 3D Stretch Toe Box	V3 Tongue System, 3D Stretch Toe Box
POWER STRAP	55mm Professional Dual Strap	55mm Professional Dual Strap	35mm Velcro Strap	35mm Velcro Strap	35mm Velcro Strap
CUFF CLOSURE	7000-Series Aluminium Buckles	7000-Series Aluminium Buckles	7000-Series Aluminium Buckles	7000-Series Aluminium Buckles	7000-Series Aluminium Buckles
SHELL CLOSURE	7000-Series Aluminium Buckles	7000-Series Aluminium Buckles	7000-Series Aluminium Buckles	7000-Series Aluminium Buckles	7000-Series Aluminium Buckles
LAST / FIT	93mm Racing Last	93mm Racing Last	93mm Racing Last	93mm Racing Last	93mm Racing Last
FORWARD LEAN SHELL ROTATION	16° (Default)/18°/ 0°	16° (Default)/18°/ 0°	16° (Default)/18°/ 0°	16° (Default)/18°/ 0°	16°/ 0°
BOOT SOLE	Racing Sole (non-replaceable)	Racing Sole (non-replaceable)	Racing Sole (non-replaceable)	Racing Sole (non-replaceable)	Racing Sole (non-replaceable)
NORM	Not in compliance with Alpine Norm ISO 5355 – Grind before Use!	Alpine Norm ISO 5355	Alpine Norm ISO 5355	Alpine Norm ISO 5355	Alpine Norm ISO 5355
WEIGHT / MONDO SIZE	2.350g / 26-26.5	2.350g / 26-26.5	2.350g / 26-26.5	2.100g / 26-26.5	1.864g / 24-24.5
WHAT'S IN THE BOX	Size Adjuster, 2nd Power Control Screw, Liner Laces, Liner Spoiler	Size Adjuster, 2nd Power Control Screw, Liner Laces, Liner Spoiler	Size Adjuster, 2nd Power Control Screw, Liner Laces, Liner Spoiler	Size Adjuster, 2nd Power Control Screw, Liner Laces	Size Adjuster, Liner Laces

#### PRICES

## BOOTS TECHNICAL SPECIFICATIONS

### REDSTER CS PROFESSIONAL 96MM NARROW LAST



### REDSTER CS 96MM NARROW LAST



### REDSTER JR 98MM NARROW LAST



PRODUCT	REDSTER CS 130 PROFESSIONAL	REDSTER CS 130	REDSTER CS 110	REDSTER CS 70 LC
ART. NO.	AE5024460 EXCLUSIVE	AE5024480	AE5024500	AE5024520
COLOR	Red / Black	Red / Black	Red / Black	Red / Black
SIZE RANGE	23/23.5 - 29/29.5	23/23.5 - 29/29.5	21/21.5 - 29/29.5	21/21.5 - 27/27.5
SHELL TECHNOLOGY	Memory Fit, Progressive Race Shell, Integrated 3mm Lift	Memory Fit, Progressive Race Shell, Integrated 3mm Lift	Memory Fit, Progressive Race Shell, Integrated 3mm Lift, True Size Mondo 21, True Size Mondo 22	Memory Fit, Progressive Race Shell, Integrated 3mm Lift, True Size Mondo 21, True Size Mondo 22
CUFF TECHNOLOGY	Power Shift Race, Dual-Sided Cuff Alignment	Power Shift Race, Dual-Sided Cuff Alignment	Power Shift Race, Dual-Sided Cuff Alignment	
SHELL / CUFF MATERIAL	PU / PU	PU / PU	PU / PU	PU / PU
CUFF HEIGHT	Regular Cuff - All Sizes	Regular Cuff - All Sizes	Regular Cuff - All Sizes	Low Cuff - All Sizes
LINER MODEL	Mimic Professional	Mimic World Cup	Mimic Gold	Silver Liner
LINER TECHNOLOGY	Mimic, Redster Foam Injection Technology, V3 Tongue System, 3D Stretch Toe Box	Mimic, V3 Tongue System, 3D Stretch Toe Box	Mimic, 3D Stretch Toe Box	3D Stretch Toe Box
POWER STRAP	55mm Professional Dual Strap	55mm Professional Dual Strap	35mm Velcro Strap	35mm Velcro Strap
CUFF CLOSURE	7000-Series Aluminium Buckles	7000-Series Aluminium Buckles	7000-Series Aluminium Buckles	7000-Series Aluminium Buckles
SHELL CLOSURE	7000-Series Aluminium Buckles	7000-Series Aluminium Buckles	7000-Series Aluminium Buckles	7000-Series Aluminium Buckles
LAST / FIT	96mm Narrow Last	96mm Narrow Last	96mm Narrow Last	96mm Narrow Last
FORWARD LEAN SHELL ROTATION	16° (Default)/18° 0°	16° (Default)/18° 0°	16° (Default)/18° 0°	16° 0°
BOOT SOLE	Racing Sole (non-replaceable)	Racing Sole (non-replaceable)	Racing Sole (non-replaceable)	Racing Sole (non-replaceable)
NORM	Alpine Norm ISO 5355	Alpine Norm ISO 5355	Alpine Norm ISO 5355	Alpine Norm ISO 5355
WEIGHT / MONDO SIZE	2.357g / 26-26.5	2.357g / 26-26.5	2.318g / 26-26.5	2.017g / 24-24.5
WHAT'S IN THE BOX	Size Adjuster, 2nd Power Shift Screw, 18° Power Shift Race Shim, Liner Laces, Liner Spoiler	Size Adjuster, 2nd Power Shift Screw, 18° Power Shift Race Shim, Liner Laces, Liner Spoiler	Size Adjuster, 2nd Power Shift Screw, 18° Power Shift Race Shim	Size Adjuster
PRICES				

PRODUCT	REDSTER JR 60 RS	REDSTER JR 60
ART. NO.	AE5025440	AE5025460
COLOR	Red / Black	Red / Black
SIZE RANGE	18/18.5 - 27/27.5	18/18.5 - 27/27.5
SHELL TECHNOLOGY	Junior Performance Shell	Junior Performance Shell
CUFF TECHNOLOGY	Progressive Cuff Design	Progressive Cuff Design
SHELL / CUFF MATERIAL	PU / PP	PP / PP
CUFF HEIGHT	Low Cuff - All Sizes	Low Cuff - All Sizes
LINER MODEL	Silver Liner	Silver Liner
LINER TECHNOLOGY	-	-
POWER STRAP	30mm Velcro Strap	30mm Velcro Strap
CUFF CLOSURE	6000-Series Aluminium Buckles	6000-Series Aluminium Buckles
SHELL CLOSURE	6000-Series Aluminium Buckles	6000-Series Aluminium Buckles
LAST / FIT	98mm Junior Last	98mm Junior Last
FORWARD LEAN SHELL ROTATION	15°	15°
BOOT SOLE	JR Grip Pads	JR Grip Pads
NORM	Alpine Norm ISO 5355	Alpine Norm ISO 5355
WEIGHT / MONDO SIZE	1.520g / 24-24.5	1.350g / 24-24.5
WHAT'S IN THE BOX	Size Adjuster	Size Adjuster
PRICES		

**REDSTER AFTERMARKET PARTS**



**REDSTER MIMIC PROFESSIONAL LINER**  
 AZE001772 / TI/STI  
 AZ001680 CS  
 BLACK/CARBON  
 SIZES: 22/22.5 – 29/29.5



**REDSTER FOAM LINER**  
 AE5017700  
 BLACK  
 SIZES: 22/22.5 – 29/29.5



**REDSTER PROFESSIONAL DUAL STRAP REDSTER**  
 AZE001730 / BLACK/RED – S/M  
 AZE001732 / BLACK/RED – M/L



**PROFESSIONAL FOAMING GUN**  
 AZE001618



**MIMIC PROFESSIONAL PODIUM**  
 AM5008771001



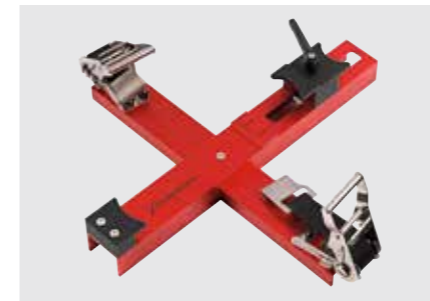
**V<sup>3</sup> TONGUE SYSTEM LV FIT**  
 AZE001710 / WHITE – 22-23  
 AZE001712 / WHITE – 24-25  
 AZE001714 / WHITE – 26-27  
 AZE001716 / WHITE – 28-29  
 AZE001718 / WHITE – 30-31



**V<sup>3</sup> TONGUE SYSTEM MV FIT**  
 AZE001700 / BLACK – 22-23  
 AZE001702 / BLACK – 24-25  
 AZE001704 / BLACK – 26-27  
 AZE001706 / BLACK – 28-29  
 AZE001708 / BLACK – 30-31



**V<sup>3</sup> TONGUE SYSTEM HV FIT**  
 AZE001720 / RED – 22-23  
 AZE001722 / RED – 24-25  
 AZE001724 / RED – 26-27  
 AZE001726 / RED – 28-29  
 AZE001728 / RED – 30-31



**PROFESSIONAL BOOT SPREADER**  
 AM5008791001



**PROFESSIONAL BOOT PRESS**  
 AM5008781001



**BOOT PRESS TOE PUNCH SET**  
 AM5008821001

**CANTING**



**REDSTER SPEED CUFF A HARDNESS**  
 FOR 130 FLEX BOOTS  
 AZE001292 / 22-23  
 AZE001294 / 24-25  
 AZE001298 / 26-27  
 AZE001296 / 28-29



**REDSTER SPEED CUFF B HARDNESS**  
 FOR 150 AND 170 FLEX BOOTS  
 AZE001254 / 22-23  
 AZE001256 / 24-25  
 AZE001258 / 26-27  
 AZE001260 / 28-29



**REDSTER BOOT BLANKET**  
 AZE001610 / S (22-25)  
 AZE001612 / M (26-29)



**CANTING ASSESSMENT SYSTEM**  
 AM5006331001



**ATOMIC CANTMATE SYSTEM**  
 AM5007781001  
 80 cm wide x 38 cm deep x 73h cm high



**REDSTER DUAL COMPONENT LIFTER**  
 AZE001794 / 21-24  
 AZE001796 / 25-29



**REDSTER AR LIFTER KIT**  
 3mm: AZE001262 / 21-24 – AZE001264 / 25-29  
 5mm: AZE001266 / 21-24 – AZE001268 / 25-29



**SHOCKSTOPPER BOOT BOARDS**  
 REDSTER CS  
 AZE001810

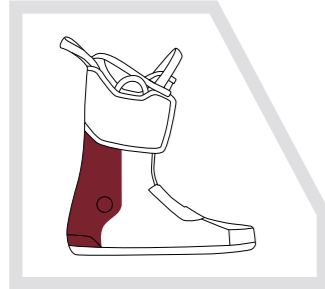
**REDSTER RT LIFTER KIT**  
 3mm: AZE001488 / 22-25 – AZE001492 / 26-29  
 5mm: AZE001490 / 22-25 – AZE001494 / 26-29

# BOOT TECHNOLOGY

## MIMIC PROFESSIONAL

Mimic Professional injects advanced foam compounds into revolutionary Mimic liner technology to create a customized fit that forms around the exact shape of the foot. The result is a liner that delivers the supreme fit, unrivaled comfort, and next-level performance.

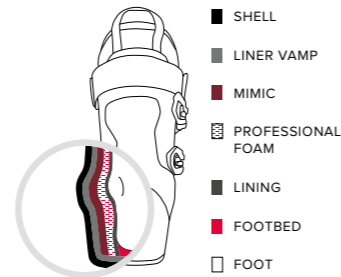
### 1. HEAT THE MIMIC ZONES IN THE OVEN



### 2. INJECT PROFESSIONAL FOAM INTO THE LINER



### 3. MIMIC: NEXT-TO-SHELL FIT; PROFESSIONAL FOAM: NEXT-TO-FOOT FIT



### PROFESSIONAL DUAL STRAP

The innovative Professional Dual Strap combines two elements together for secure, balanced performance. Elastic shock absorbing portion smooths out choppy terrain and increases damping while static section provides pure power and energy transmission.



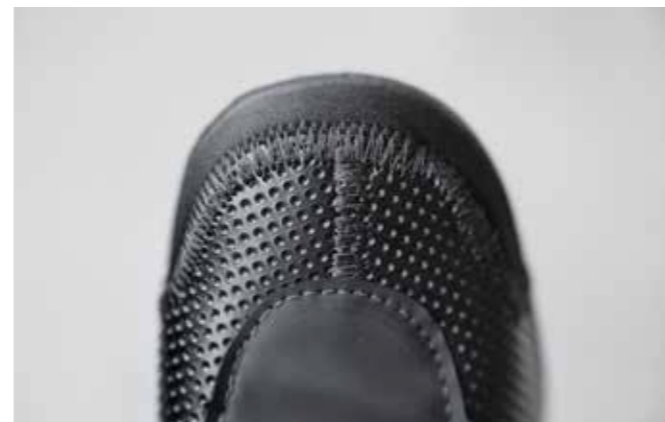
### PROGRESSIVE RACE SHELL

Our Redster TI and CS boots feature a special shell made from thicker but softer material. This provides a more progressive flex and better damping, plus a more supple feel – making it easier to ski aggressively in all conditions and on all courses.



### V3 TONGUE SYSTEM

Customizable V3 Tongue System allows you to select the ideal tongue thickness to suit your needs. Choose between Low Volume (LV) fit, Medium Volume (MV) fit and High Volume (HV) fit for the ultimate interface between shin and liner.



### 3D STRETCH TOE BOX

Asymmetrically shaped for left and right, the new 3D Stretch Toe Box takes first fit and customization potential to the next level. Its 'Big Toe Friendly' construction maximizes the liner's available length allowing for a little extra stretch when important millimeters are required to achieve the perfect fit.

## POLES TECHNICAL SPECIFICATIONS

### REDSTER

### REDSTER JR



PRODUCT	ART. NO.	COLOR	SIZES (cm)	SHAFT	GRIP	STRAP	BASKET	TIP	FEATURES	WEIGHT	PRICES
<b>REDSTER RS SL SQS</b>	AJ5005676	Red / Carbon	110, 115, 120, 125, 130, 135	Unbreakable Guarantee, 6★ Carbon Pole Technology, 3K Kevlar	Ergonomic Redster Grip (2K)	Pro Strap	Race Basket (40mm)	Carbide Tip	SQS - Safety Quick Release System, Hand Guard-ready, Ergonomic M-Fit	240g / 120cm	
<b>REDSTER RS GS SQS</b>	AJ5005674	Red / Carbon	110, 115, 120, 125, 130, 135	Unbreakable Guarantee, 6★ Carbon Pole Technology, Bent Shaft, 3K Kevlar	Ergonomic Redster Grip (2K)	Pro Strap	Race Basket (40mm)	Carbide Tip	SQS - Safety Quick Release System, Hand Guard-ready, Ergonomic M-Fit	280g / 120cm	
<b>REDSTER ULTRA SQS</b>	AJ5005678	Red / Black	110, 115, 120, 125, 130, 135	6★ Ultra Carbon Pole Technology	Ergonomic Redster Grip (2K)	Pro Strap	Race Basket (40mm)	Carbide Tip	SQS - Safety Quick Release System, Hand Guard-ready, Ergonomic M-Fit	210g / 120cm	
<b>REDSTER CARBON SQS</b>	AJ5005680	Red / Carbon	110, 115, 120, 125, 130, 135	6★ Carbon Pole Technology	Ergonomic Redster Grip (2K)	Pro Strap	Race Basket (40mm)	Carbide Tip	SQS - Safety Quick Release System, Hand Guard-ready, Ergonomic M-Fit	220g / 120cm	
<b>REDSTER RS SQS</b>	AJ5005684	Red / Black	110, 115, 120, 125, 130, 135	5★ Aluminum Pole Technology	Ergonomic Redster Grip (2K)	Premium Strap	Race Basket (40mm)	Carbide Tip	SQS - Safety Quick Release System, Hand Guard-ready, Ergonomic M-Fit	230g / 120cm	
<b>REDSTER GS SQS</b>	AJ5005682	Red / Black	110, 115, 120, 125, 130, 135	5★ Aluminum Pole Technology, Bent Shaft	Ergonomic Redster Grip (2K)	Premium Strap	Race Basket (40mm)	Carbide Tip	SQS - Safety Quick Release System, Ergonomic M-Fit	225g / 120cm	
<b>REDSTER</b>	AJ5005686	Red	110, 115, 120, 125, 130, 135	4★ Aluminum Pole Technology	Ergonomic Redster Grip	Essential Strap	Race Basket (40mm)	Steel Tip	Ergonomic M-Fit	255g / 120cm	
<b>REDSTER HAND GUARD SYSTEM</b>	AJ5005724	Red				Pro Strap			Compatible with all Redster SQS models	130g	
<b>REDSTER JR SQS</b>	AJ5005722	Red	70, 75, 80, 85, 90, 95, 100, 105	5★ Aluminum Pole Technology	Ergonomic Redster Grip (2K)	Premium Strap	Race Basket (40mm)	Steel Tip	SQS - Safety Quick Release System, Hand Guard-ready, Ergonomic JR Fit	150g / 90cm	
<b>REDSTER GS JR</b>	AJ5005720	Red	90, 95, 100, 105, 110	4★ Aluminum Pole Technology, Bent Shaft	Ergonomic JR Grip (1K)	Essential Strap	Race Basket (40mm)	Steel Tip	Ergonomic JR Fit	150g / 90cm	
<b>REDSTER JR</b>	AJ5005718	Red	70, 75, 80, 85, 90, 95, 100, 105	3★ Aluminum Pole Technology	Ergonomic JR Grip (1K)	Essential Strap	Race Basket (40mm)	Steel Tip	Ergonomic JR Fit	150g / 90cm	

REDSTER SL CTD

# REDSTER SL



### Feel safe as you race

The unique combination of AMID, Holo Core and an extra-durable PC Racecase delivers World Cup level protection. Redster SL CTD also features Shocksense for monitoring impact-damage from falls and gates. Dial up your safety, dial up your speed.

### Protect yourself with the perfect fit

The Redster SL is so snug you'll forget you're wearing it! It comes with a 360° Fit System and Atomic Live Fit – our unique memory foam system that molds to your head shape for an instant individual fit. Ready to face any race.

### Worn by our World Cup athletes

Speed and safety are in every detail of the Redster SL. It also comes with an adjustable Chin Guard in the box. It's the new Atomic helmet for all slalom racers, from young guns to our World Cup pros.

## HELMETS TECHNICAL SPECIFICATIONS

### RACE

#### REDSTER SL CTD



AN5006302 **EXCLUSIVE**  
**REDSTER SL CTD NEW**  
BLACK



AN5006306 **EXCLUSIVE**  
**REDSTER SL CTD NEW**  
DARK RED



AN5006304 **EXCLUSIVE**  
**REDSTER SL CTD NEW**  
LIGHT GREY / GREY

#### REDSTER SL



AN5006308  
**REDSTER SL NEW**  
BLACK



AN5006312  
**REDSTER SL NEW**  
RED



AN5006310  
**REDSTER SL NEW**  
WHITE / GREY

PRODUCT	ART. NO. COLOR	SIZES – WEIGHT	SAFETY TECH.	FIT	CONSTRUCTION / VENTING / LINING	EXTRAS	CERTIFICATION	PRICES
<b>REDSTER SL CTD</b>	AN5006302 Black	S (51-55) M (55-59)	Shocksense, AMID, Holo Core	Live Fit, 360° Fit System, 3D Molded Ear Pads	PC Racecase / Aircon Venting / Removable and Washable Full Cap Ski Lining, 3M™ X-Static Lining	Atomic Shocksense App, SOS Alert Function, Impact Assessment, Helmet Bag, Magnetic Fidlock® Buckle, Removable Goggle Clip, Height-Adjustable Chin Guard included	ASTM F 2040, CE EN 1077:2007 CLASS B	
	AN5006306 Dark Red	L (59-63) XL (63-65)						
	AN5006304 Light Grey / Grey	– 400g / S						
<b>REDSTER SL</b>	AN5006308 Black	S (51-55) M (55-59)	AMID, Holo Core	Live Fit, 360° Fit System, 3D Molded Ear Pads	PC Racecase / Aircon Venting / Removable and Washable Full Cap Ski Lining, 3M™ X-Static Lining	Helmet Bag, Magnetic Fidlock® Buckle, Removable Goggle Clip, Height-Adjustable Chin Guard included	ASTM F 2040, CE EN 1077:2007 CLASS B	
	AN5006312 Red	L (59-63) XL (63-65)						
	AN5006310 White / Grey	– 380g / S						

# HELMETS TECHNICAL SPECIFICATIONS

## RACE

### REDSTER WC CTD



AN5006116 **EXCLUSIVE**  
**REDSTER WC CTD**  
BLACK



AN5006120 **EXCLUSIVE**  
**REDSTER WC CTD**  
RED



AN5006122 **EXCLUSIVE**  
**REDSTER WC CTD**  
GREY

### REDSTER CTD



AN5006124 **EXCLUSIVE**  
**REDSTER CTD**  
BLACK



AN5006128 **EXCLUSIVE**  
**REDSTER CTD**  
RED

### REDSTER



AN5006126 **EXCLUSIVE**  
**REDSTER CTD**  
WHITE



AN5006132  
**REDSTER**  
BLACK



AN5006136  
**REDSTER**  
RED



AN5006134  
**REDSTER**  
WHITE



AN5006138  
**REDSTER**  
GREY

## RACE JUNIOR

### REDSTER JR CTD



AN5006298 **EXCLUSIVE**  
**REDSTER JR CTD NEW**  
BLACK / GREY



AN5006300 **EXCLUSIVE**  
**REDSTER JR CTD NEW**  
LIGHT GREY / GREY

### REDSTER JR



AN5006142  
**REDSTER JR**  
BLACK



AN5006146  
**REDSTER JR**  
RED



AN5006150  
**REDSTER JR**  
SCUBA BLUE



AN5006144  
**REDSTER JR**  
WHITE

### CHIN GUARD



AN5006228  
**REDSTER CHIN GUARD**  
**SYSTEM**  
BLACK

PRODUCT	ART. NO. COLOR	SIZES - WEIGHT	SAFETY TECH.	FIT	CONSTRUCTION / VENTING / LINING	EXTRAS	CERTIFICATION	PRICES
<b>REDSTER WC CTD</b>	AN5006116 Black	XS (51-53) S (53-55) M (55-57)	Shocksense, AMID, Holo Core	Live Fit, 360° RS Fit System, 3D Molded Ear Pads	Carbon Racecase / Aircon Venting / Merino 3M™ X-Static Lining, RS Full Cap Liner	Atomic Shocksense App, SOS Alert Function, Impact Assessment, Chin Guard Compatible, Magnetic Fidlock® Buckle, Removable Goggle Clip, Acoustic Plates, Attachable RS Helmet Bag	ASTM F 2040, CE EN 1077:2007 CLASS A, FIS RH 2013	
	AN5006120 Red	L (57-59) XL (59-61) XXL (61-63)						
	AN5006122 Grey	-						
		600g / S						
<b>REDSTER CTD</b>	AN5006124 Black	XS (51-53) S (53-55) M (55-57)	Shocksense, AMID, Holo Core	Live Fit, 360° RS Fit System, 3D Molded Ear Pads	ABS Racecase / Aircon Venting / 3M™ X-Static Lining, RS Full Cap Liner	Atomic Shocksense App, SOS Alert Function, Impact Assessment, Chin Guard Compatible, Magnetic Fidlock® Buckle, Removable Goggle Clip, Acoustic Plates, Attachable RS Helmet Bag	ASTM F 2040, CE EN 1077:2007 CLASS A, FIS RH 2013	
	AN5006128 Red	L (57-59) XL (59-61)						
	AN5006126 White	XXL (61-63)						
		700g / S						
<b>REDSTER</b>	AN5006132 Black	XS (51-53) S (53-55)	AMID, Holo Core	Live Fit, 360° RS Fit System, 3D Molded Ear Pads	ABS Racecase / Aircon Venting / 3M™ X-Static Lining, RS Full Cap Liner	Chin Guard Compatible, Helmet Bag, Magnetic Fidlock® Buckle, Removable Goggle Clip, Acoustic Plates	ASTM F 2040, CE EN 1077:2007 CLASS A, FIS RH 2013	
	AN5006136 Red	M (55-57) L (57-59)						
	AN5006134 White	XL (59-61) XXL (61-63)						
	AN5006138 Grey	-						
		700g / S						

PRODUCT	ART. NO. COLOR	SIZES - WEIGHT	SAFETY TECH.	FIT	CONSTRUCTION / VENTING / LINING	EXTRAS	CERTIFICATION	PRICES
<b>REDSTER JR CTD</b>	AN5006298 Black / Grey	S/M (51-55)	Shocksense, Holo Core	Live Fit, 360° RS Fit System, 3D Molded Ear Pads	ABS Racecase / Aircon Venting / RS Liner	Atomic Shocksense App, SOS Alert Function, Impact Assessment, Chin Guard Compatible, Helmet Bag, Removable Goggle Clip, Acoustic Plates	ASTM F 2040, CE EN 1077:2007 CLASS A, FIS RH 2013	
	AN5006300 Light Grey / Grey	M/L (55-59) -						
		670g / S/M						
<b>REDSTER JR</b>	AN5006142 Black	S/M (51-55)	Holo Core	Live Fit, 360° Fit System, 3D Molded Ear Pads	ABS Racecase / Aircon Venting / RS Liner	Chin Guard Compatible, Helmet Bag, Acoustic Plates	ASTM F 2040, CE EN 1077:2007 CLASS A, FIS RH 2013	
	AN5006146 Red	M/L (55-59)						
	AN5006150 Scuba Blue	-						
	AN5006144 White	650g / S/M						
<b>REDSTER CHIN GUARD SYSTEM</b>	AN5006228 Black	one Size fits all				Compatible with: Redster WC CTD, Redster WC, Redster, Redster JR		

# PROTECTION TECHNOLOGY

## SURPREME PROTECTION

### SHOCKSENSE

Shocksense uses a sensor inside your helmet to transmit impact data to the Atomic Shocksense App. It determines whether you need to replace the helmet and can send an SOS alert, as well as your GPS location, to emergency contacts. Meaning you're free to push your limits with total confidence in your equipment.



### AMID

AMID (Atomic Multi-directional Impact Deflector) is our revolutionary dual-density foam system that provides up to 40% higher impact protection than industry safety standards require.



## INSTANT FIT

### 360° FIT SYSTEM + LIVE FIT

Live Fit pads form a wide band of memory foam that adapts precisely to your head for an instant individual fit. The progressive height-adjustable 360° Fit System lets you finetune the helmet to your head size – and also your headshape. It's 100% personalized comfort guaranteed for every skier.



### 360° RS FIT SYSTEM

The 360° RS Fit System lets you tailor your helmet to exactly your head shape, size and height. For an extra layer of fine-tuning, it also comes with customizable Live Fit pads on each side of your head that allow you to perfectly fit the helmet to a more oval or round head shape.



## RACE CONSTRUCTION

### CARBON RACECASE

The handcrafted Carbon Racecase is supremely stiff, strong and super light. Featuring a multi-directional layup for unrivaled protection and structural stability, it's specifically designed for racing.



### ABS RACECASE

The injection-molded ABS Racecase is a stiff and strong shell, designed for guaranteed protection when skiing at speed.



### PC RACECASE

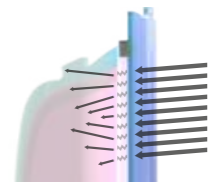
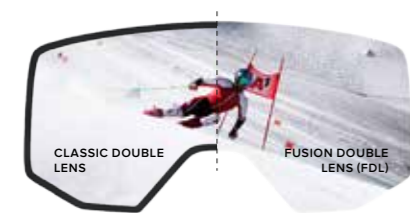
Our super durable PC Racecase delivers world-cup level protection. It's a strong outer layer that provides protection from the high impacts you can get while racing, including hitting gates at speed.



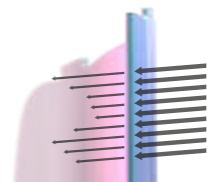
## SEE BETTER. SKI BETTER

### FUSION DOUBLE LENS FDL

Fusion Double Lens (FDL) is the next-generation for double lens construction: it uses lamination instead of connecting the cylindrical lenses with an additional foam layer. This means an up to 20% larger field of vision compared to a classic double lens construction. And because the two lenses are laminated together, there's no double light refractions, no reflections and no decline in optics due to changes in atmospheric pressure at altitude.



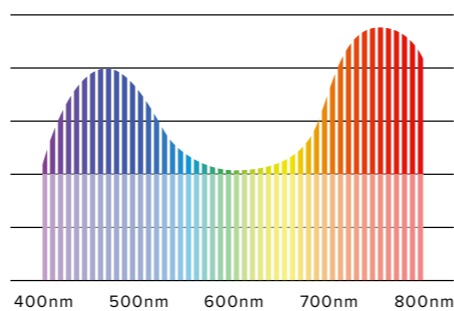
CLASSIC DOUBLE LENS



FUSION DOUBLE LENS (FDL)

### HD LENS TECHNOLOGY HD

HD lens technology uses crystals in the lens to create incredible snow visibility and high-definition contrast. Our guarantee of crystal clear vision – in all light conditions!



## GOGGLES TECHNICAL SPECIFICATIONS

### CYLINDRICAL

#### SAVOR BIG HD RS



AN5106210  
**SAVOR BIG HD RS**  
RED  
RED HD  
CAT. HD 3-2  
—  
2 EXTRA LENSES



AN5106208  
**SAVOR BIG HD RS**  
BLACK  
GREEN HD  
CAT. HD 3-2  
—  
2 EXTRA LENSES

#### SAVOR HD RS



AN5106306  
**SAVOR HD RS NEW**  
BLACK  
PINK COPPER HD  
CAT. HD 3-2  
—  
2 EXTRA LENSES



AN5106308  
**SAVOR HD RS NEW**  
RED  
PINK COPPER HD  
CAT. HD 3-2  
—  
2 EXTRA LENSES

### SPHERICAL

#### COUNT 360° HD RS



AN5106118  
**COUNT 360° HD RS**  
BLACK  
GREEN HD  
CAT. HD 3-2  
—  
2 EXTRA LENSES



AN5106012  
**COUNT 360° HD RS**  
RED  
RED HD  
CAT. HD 3-2  
—  
2 EXTRA LENSES

### KIDS SPHERICAL

#### COUNT JR HD RS



AN5106100  
**COUNT JR HD RS**  
RED  
PINK/COPPER HD  
CAT. HD 3-2  
—  
2 EXTRA LENSES

PRODUCT	ART. NO.	COLOR	FIT	LENS TYPE	CAT.	VLT	WEATHER	FRAME AND EXTRAS	LENS TECHNOLOGY	PRICES
<b>SAVOR BIG HD RS</b>	AN5106210	Red	Large	Red HD, Extra L. 1: Yellow/Blue HD, Extra L. 2: Clear	HD 3-2	—	performs best in cat. 3-2	Live Fit Frame, Vent Foam, Adaptive LF Tri-Layer Face Foam, Silicone-coated Strap, Over The Glasses Compatible (OTG LITE), Including Microfiber Goggle Bag, Extra Lens included	Cylindrical Fusion Double Lens (FDL), HD Lens Technology, Supreme Anti-scratch Outer Lens (PC), Hydrophobic Lens Coating, 8x Anti-fog Inner Lens (AC), Easy Lens Switch	
	AN5106208	Black	Large	Green HD, Extra L. 1: Yellow/Blue HD, Extra L. 2: Clear	HD 3-2	—	performs best in cat. 3-2			
<b>SAVOR HD RS</b>	AN5106306	Black	Medium	Pink Copper HD, Extra L. 1: Pink/Yellow Stereo Extra L. 2: Clear Lens	HD 3-2	—	performs best in cat. 3-2	Live Fit Frame, Vent Foam, Adaptive LF Tri-Layer Face Foam, Silicone-coated Strap, Over The Glasses Compatible (OTG LITE), Including Microfiber Goggle Bag, Extra Lens included	Cylindrical Double Lens, HD Lens Technology, Stereo Lens Technology, Hydrophobic Lens Coating, Anti-fog Inner Lens (AC), Easy Lens Switch	
	AN5106308	Red	Medium	Pink Copper HD, Extra L. 1: Pink/Yellow Stereo Extra L. 2: Clear Lens	HD 3-2	—	performs best in cat. 3-2			
<b>COUNT 360° HD RS</b>	AN5106118	Black	Large	Green HD, Extra L. 1: Yellow/Blue HD, Extra L. 2: Clear Lens	HD 3-2	—	performs best in cat. 3-2	Ultra-Thin Live Fit Frame, Vent Foam, Adaptive LF Tri-Layer Face Foam, Silicone-coated Strap, Including Microfiber Goggle Bag, Extra Lens included	Spherical Fusion Double Lens (FDL), HD Lens Technology, Supreme Anti-scratch Outer Lens (PC), Hydrophobic Lens Coating, 8x Anti-fog Inner Lens (AC), Easy Lens Switch	
	AN5106012	Red	Large	Red HD, Extra L. 1: Pink/Yellow HD, Extra L. 2: Clear Lens	HD 3-2	—	performs best in cat. 3-2			
<b>COUNT JR HD RS</b>	AN5106100	Red	Junior	Pink/Copper HD, Extra L. 1: Pink/Blue Stereo, Extra L. 2: Clear Lens	HD 3-2	—	performs best in cat. 3-2	Live Fit Frame, Adaptive LF Tri-Layer Face Foam, Silicone-coated Strap, Over The Glasses Compatible (OTG LITE), Including Microfiber Goggle Bag, Extra Lens included	Spherical Double Lens, HD Lens Technology, Flash Lens Technology, Supreme Anti-scratch Outer Lens (PC), Hydrophobic Lens Coating, Anti-fog Inner Lens (AC), Easy Lens Switch	

## BODY PROTECTION TECHNICAL SPECIFICATIONS

### LIVE SHIELD VEST AMID MEN



AN5205034  
**LIVE SHIELD VEST AMID M**  
ALL BLACK



AN5205012  
**LIVE SHIELD VEST AMID M**  
RED

### LIVE SHIELD VEST AMID WOMEN



AN5205038  
**LIVE SHIELD VEST AMID W**  
BLACK

### LIVE SHIELD SHORTS



AN5205026  
**LIVE SHIELD SHORTS**  
GREY / BLACK

### JUNIOR



AN5205032  
**LIVE SHIELD AMID JR**  
RED

PRODUCT	ART. NO.	COLOR	SIZES	SAFETY TECHN.	WEIGHT	FABRIC	FIT	EXTRAS	PRICES
<b>LIVE SHIELD VEST AMID M</b>	AN5205034	All Black	S	AMID Body	590g / S	Elastic Air Mesh, 4-Way Stretch Lycra	Ergonomic Slim Fit, Removable and Height Adjustable Belt	Highly Breathable, Ultra Flexible, Washable, Lightweight	
	AN5205012	Red	M L XL						
<b>LIVE SHIELD VEST AMID W</b>	AN5205038	Black	XS S M L	AMID Body	520g / S	Elastic Air Mesh, 4-Way Stretch Lycra	Ergonomic Slim Fit, Removable and Height Adjustable Belt	Highly Breathable, Ultra Flexible, Washable, Lightweight	
<b>LIVE SHIELD SHORTS</b>	AN5205026	Grey / Black	XXS XS S M L	Multi-density 3-Layer Foam, Removable Coccyx Pads	390g / S	Elastic Air Mesh, 4-Way Stretch Lycra	Active Thermo Fit	Breathable, Flexible, Washable, Ultra Lightweight	
<b>LIVE SHIELD AMID JR</b>	AN5205032	Red	S M L	AMID Body	520g / S	Elastic Air Mesh, 4-Way Stretch Lycra	Ergonomic Slim Fit, Removable and Height Adjustable Belt	Highly Breathable, Ultra Flexible, Washable, Lightweight	

## BAGS AND PACKS TECHNICAL SPECIFICATIONS



AL5045710  
**LAPTOP PACK**  
BLACK



AL5045720  
**LAPTOP PACK**  
BLACK DARK RED



AL5047520  
**CABIN TROLLEY**  
BLACK / BLACK



AL5047420  
**TROLLEY 90L**  
BLACK / BLACK



AL5047410  
**TROLLEY 90L**  
RED / RIO RED



AL5049110  
**RS SKI FIX 10 PCS**  
BLACK / BLACK



AL5049210  
**ECO SKI FIX 10 PCS**  
BLACK / RED

PRODUCT	ART. NO.	COLOR	VOL.	DIMENSIONS H x L x W	WEIGHT	FABRIC	CONSTRUCTION	FEATURES	PRICES
<b>LAPTOP PACK</b>	AL5045710	Black	20L	51x30x16cm	1300g	420D Poly with PU Coating, 600D Poly with Neo Coating, 150D Poly with PU*2 Coating, PVC free	Main Compartment with Integrated Organizers, 17" Padded Laptop Compartment, Easy Access to Main Compartment, Internal Zippered Pockets, Top Handle, Padded Shoulder Straps, Fully Padded, Internal Document Sleeve, Adjustable Shoulder Straps	EVA Molded Backpanel, Water- and Stain-resistant Outer Fabric, 365 Days Usage, Slim Design	
	AL5045720	Dark Red							
<b>CABIN TROLLEY</b>	AL5047520	Black / Black	40L	52x33x20cm	2200g	500D Poly with PU Coating, 600D Poly with Neo Coating, 150D Poly with PU*2 Coating, PVC free	Easy Access to Main Compartment, Front Accessory Pocket, Mesh Pocket Inside Lid (Laptop Compatible), Retractable Top Handle, Internal Document Sleeve, Cushioned Handles	Silent Big Wheels (8,5 cm), Water- and Stain-resistant Outer Fabric, Name Card Template, Durable, 365 Days Usage	
<b>TROLLEY 90L</b>	AL5047420	Black / Black	90L	74x40x29cm	4000g	500D Poly with PU Coating, 600D Poly with Neo Coating, 150D Poly with PU*2 Coating, PVC free	Easy Access to Main Compartment, Front Accessory Pocket, Internal Pockets, Retractable Top Handle, Cushioned Handles	Silent Big Wheels (8,5 cm), Water- and Stain-resistant Outer Fabric, Name Card Template, Durable, 365 Days Usage	
	AL5047410	Red / Rio Red							
<b>RS SKI FIX 10 PCS</b>	AL5049110	Black / Black	-	43x5.7x1cm	28g				
<b>ECO SKI FIX 10 PCS</b>	AL5049210	Black / Red	-	45.5x4.5x1cm	7g				



## BAGS AND PACKS TECHNICAL SPECIFICATIONS



AL5050310  
**RS PACK 30L**  
RED / RIO RED



AL5045420  
**RS PACK 50L**  
RED / RIO RED



AL5045320  
**RS PACK 90L**  
RED / RIO RED



AL5047620  
**RS DOUBLE SKI WHEELIE**  
BLACK / BLACK



AL5047610  
**RS DOUBLE SKI WHEELIE**  
RED / RIO RED



AL5047110  
**RS HEATED BOOT PACK 120V**  
RED / RIO RED



AL5047210  
**RS HEATED BOOT PACK 230V**  
RED / RIO RED



AL5047310  
**RS TRUNK 130L**  
RED / RIO RED



AL5046410  
**RS GOGGLE CASE 2 PAIRS**  
BLACK



AL5034720  
**REDSTER FIS SKI BAG**  
BLACK



AL5050610  
**RS SKI WHEELIE 4 PAIRS +**  
RED / RIO RED

PRODUCT	ART. NO.	COLOR	VOL.	DIMENSIONS H x L x W	WEIGHT	FABRIC	CONSTRUCTION	FEATURES	PRICES
<b>RS PACK 30L</b>	AL5050310	Red / Rio Red	30L	50x30x24cm	1100g	500D Poly with PU Coating, 600D Poly with Neo Coating, Tarpaulin Lining, 150D Poly with PU*2 Coating, PVC free	Main Compartment, Easy Access to Main Compartment, Tangle-free, Internal Zippered Pockets, Integrated Handle, Ventilation Grid, Chest Strap, Adjustable Hip Belt, Padded Shoulder Straps, Boot Fixation Station, Boot Fixation Cover	Easy Cleaning Tarpaulin Lining, Water- and Stain-resistant Outer Fabric, Name Tag Print, Durable	
<b>RS PACK 50L</b>	AL5045420	Red / Rio Red	50L	58x34x26cm	1250g	500D Poly with PU Coating, 600D Poly with Neo Coating, Tarpaulin Lining, 150D Poly with PU*2 Coating, PVC free	Main Compartment for Boots, Helmet and Accessories, Easy Access to Main Compartment, Integrated Handle with Ventilation Grid, Chest Strap, Adjustable Hip Belt, Padded Shoulder Straps, Fully Padded, Internal Zippered Pocket, Adjustable Shoulder Straps	Easy Cleaning Tarpaulin Lining, Water- and Stain-resistant Outer Fabric, Name Tag Print, Durable	
<b>RS PACK 90L</b>	AL5045320	Red / Rio Red	90L	70x47x38cm	1600g	500D Poly with PU Coating, 600D Poly with Neo Coating, Tarpaulin Lining, 150D Poly with PU*2 Coating, PVC free	Main Compartment for Boots, Helmet and Accessories, Separate Ski Boot Bag, Easy Access to Main Compartment, Top Handle, Integrated Handle with Ventilation Grid, Chest Strap, Adjustable Hip Belt, Padded Shoulder Straps, Fully Padded, Internal Zippered Pocket, Adjustable Shoulder Straps	Easy Cleaning Tarpaulin Lining, Water- and Stain-resistant Outer Fabric, Name Tag Print, Durable	
<b>RS HEATED BOOT PACK 120V</b>	AL5047110	Red / Rio Red	70L	60x45x35cm	2300g	500D Poly with PU Coating, 600D Poly with Neo Coating, Tarpaulin Lining, 150D Poly with PU*2 Coating, PVC free	Main Compartment for Boots, Helmet and Accessories, Easy Access to Main Compartment, External Pockets, Integrated Handle with Ventilation Grid, Chest Strap, Adjustable Hip Belt, Padded Shoulder Straps, Padded Back Panel, Internal Zippered Pocket, Cushioned Handles, Removeable Boot Basket	DC Plug and Car Cable Plug-In (12V) AC, 3 Temperature Settings: High (60°C/140°F), Medium (52°C/125°F), Low (45°C/113°F), Easy Cleaning Tarpaulin Lining, Water- and Stain-resistant Outer Fabric, Name Tag Print, Integrated Step-On Mat, 12V/DC/45W.110V/AC/108W - ETL-5005384	
<b>RS HEATED BOOT PACK 230V</b>	AL5047210	Red / Rio Red	70L	60x45x35cm	2300g	500D Poly with PU Coating, 600D Poly with Neo Coating, Tarpaulin Lining, 150D Poly with PU*2 Coating, PVC free	Main Compartment for Boots, Helmet and Accessories, Easy Access to Main Compartment, External Pockets, Integrated Handle with Ventilation Grid, Chest Strap, Adjustable Hip Belt, Padded Shoulder Straps, Padded Back Panel, Internal Zippered Pocket, Cushioned Handles	DC Plug and Car Cable Plug-In (12V) AC, 3 Temperature Settings: High (60°C/140°F), Medium (52°C/125°F), Low (45°C/113°F), Easy Cleaning Tarpaulin Lining, Water- and Stain-resistant Outer Fabric, Name Tag Print, Integrated Step-On Mat, 12V/DC/45W.110V/AC/108W - ETL-5005384	
<b>RS TRUNK 130L</b>	AL5047310	Red / Rio Red	130L	98x45x35cm	4700g	500D Poly with PU Coating, 600D Poly with Neo Coating, Tarpaulin Lining, 150D Poly with PU*2 Coating, PVC free	Easy Access to Main Compartment, Front Accessory Pocket, Internal Pockets, Retractable Top Handle, Cushioned Handles	Water-repellent 2 Pair Boot Compartment (Connectable), Silent Big Wheels (8.5 cm), Easy Cleaning Tarpaulin Lining, Water- and Stain-resistant Outer Fabric, Name Tag Print, Durable, 365 Days Usage	
<b>RS GOGGLE CASE 2 PAIRS</b>	AL5046410	Black	3L	22x19x15cm	400g	600D Poly with PU Coating, 600D Poly with Neo Coating, 150D Poly with PU*2 Coating, PVC free	Top Handle, Fully Padded	Water- and Stain-resistant Outer Fabric, Name Tag Print, Integrated Pocket Mirror	
<b>RS DOUBLE SKI WHEELIE</b>	AL5047620 AL5047610	Black / Black Red / Rio Red	-	217x25x17cm	2700g	500D Poly with PU Coating, 600D Poly with Neo Coating, Tarpaulin Lining, PVC free	Easy Access to Main Compartment, Helmet and Accessory Pocket, External Compression Straps, Fully Padded, Adjustable Length, Length Adjustment: Rolltop + Daisy Chain Hooks, Cushioned Handles	Silent Big Wheels (8.5 cm), Easy Cleaning Tarpaulin Lining, Water- and Stain-resistant Outer Fabric, Name Tag Print, Durable	
<b>REDSTER FIS SKI BAG 3 PAIRS</b>	AL5034720	Black	-	185x10x40cm 205x10x40cm 230x10x40cm	3200g 3400g 3600g	2000D*2000D Poly with TPE Coating, 600D Poly with Neo Coating, Tarpaulin Lining, PVC free	External Compression Straps, Fully Padded	Name Tag Print, Durable	
<b>RS SKI WHEELIE 4 PAIRS +</b>	AL5050610	Red / Rio Red	-	50x45x45cm	5000g	500D Poly with PU Coating, 600D Poly with Neo Coating, Tarpaulin Lining, PVC free	Top Handle, Side Handles, External Compression Straps, Fully Padded, Ski Length Adjuster (215 cm Max Length), Length Adjustment: Rolltop + Daisy Chain Hooks, Internal Zippered Pocket, Cushioned Handles	Silent Big Wheels (8.5 cm), Easy Cleaning Tarpaulin Lining, Water- and Stain-resistant Outer Fabric, Name Tag Print	

## APPAREL TECHNICAL SPECIFICATIONS

### RACE LINE



AP5109510  
**RS RAIN COAT**  
RED



AP5113510  
**RS JACKET NEW**  
RED



AP5113520  
**RS JACKET NEW**  
BLACK



AP5113710  
**RS KIDS JACKET NEW**  
RED

### RACE LINE



AP5107510  
**RS HOODIE**  
RED



AP5107520  
**RS HOODIE**  
BLACK



AP5110310  
**RS KIDS HOODIE**  
RED



AP5110320  
**RS KIDS HOODIE**  
BLACK

PRODUCT NAME	ART. NO.	WEIGHT g / size M	COLOR	SIZES	GENDER	FABRIC	FEATURES	PRICES
<b>RS RAIN COAT</b>	AP5109510	830	Red	M XL	Unisex	Standard 100 by OEKO-TEX®, Atomic Allweather Shell 3L PFOA & PFOS free DWR (100% PA, 205g/m², 160D)	PU Ink Print, Length Adjustment, Zippered Side Openings, Front Pocket, Oversized Fit	
<b>RS JACKET</b>	AP5113510 AP5113520	345	Red Black	S M L XL 2XL	Unisex	100% recycled Polyamid (Face and Backing), Contains recycled materials, Water repellent	Embossed Atomic Branding, Racing Flag Label, PU Ink Print, Bottom Hem Adjustment, Hand Pockets, Atomic Thermabody Insulation (80g/m²), YKK® Zippers, Casual Fit	
<b>RS KIDS JACKET</b>	AP5113710	260	Red	S M L XL	Junior	100% recycled Polyamid (Face and Backing), Contains recycled materials, Water repellent	Embossed Atomic Branding, Racing Flag Label, PU Ink Print, Bottom Hem Adjustment, Hand Pockets, Atomic Thermabody Insulation (80g/m²), YKK® Zippers, Kids Fit	
<b>RS HOODIE</b>	AP5107510 AP5107520	460	Red Black	XS S M L XL 2XL	Unisex	Molleton Single Jersey (100% Cotton, Gratte)	PU Ink Print, Gender Neutral Fit	
<b>RS KIDS HOODIE</b>	AP5110310 AP5110320	360	Red Black	S M L XL	Junior	Molleton Single Jersey (100% Cotton, Gratte)	PU Ink Print	

### RACE LINE



AP5108810  
**RS SWEAT PANT**  
BLACK



AP5112910  
**RS T-SHIRT NEW**  
RED



AP5112920  
**RS T-SHIRT NEW**  
BLACK



AP5113610  
**RS KIDS T-SHIRT NEW**  
RED

### RACE LINE



AP5115220  
**RS WC T-SHIRT NEW**  
BLACK



AP5115210  
**RS WC T-SHIRT NEW**  
BLUISH GREY



AP5114110  
**ATOMIC POLO-SHIRT NEW**  
ANTHRACITE

### ATOMIC LINE

PRODUCT NAME	ART. NO.	WEIGHT g / size M	COLOR	SIZES	GENDER	FABRIC	FEATURES	PRICES
<b>RS SWEAT PANT</b>	AP5108810	320	Black	XS S M L XL 2XL	Unisex	Molleton Single Jersey (100% Cotton, Gratte)	PU Ink Print, Side Pockets, Gender Neutral Fit	
<b>RS T-SHIRT</b>	AP5112910 AP5112920	170	Red Black	S M L XL 2XL	Unisex	70% Cotton, 30% Modal, 172g/m²	Plastisol Print, Neck Tag, 3D High Density Print, Casual Fit	
<b>RS KIDS T-SHIRT</b>	AP5113610	120	Red	XS S M L XL	Junior	70% Cotton, 30% Modal, 172g/m²	Plastisol Print, Neck Tag, 3D High Density Print, Kids Fit	
<b>RS WC T-SHIRT</b>	AP5115220 AP5115210	150	Black Bluish Grey	S M L XL 2XL	Unisex	67% Cotton, 27% Modal, 6% Elastane, 155g/m²	Neck Tag, Chest Pocket, Casual Fit	
<b>ATOMIC POLO SHIRT</b>	AP5114110	245	Anthracite	S M L XL 2XL	Unisex	76% Modal, 24% recycled PES, 227g/m²	Plastisol Print, Neck Tag, Classic Fit	

## APPAREL TECHNICAL SPECIFICATIONS

### ATOMIC LINE



AP5107910  
**ATOMIC SWEATER**  
ANTHRACITE



AP5107920  
**ATOMIC SWEATER**  
MAROON



AP5107610  
**W ATOMIC SWEATER**  
ANTHRACITE



AP5107620  
**W ATOMIC SWEATER**  
MAROON

PRODUCT NAME	ART. NO.	WEIGHT g / size M	COLOR	SIZES	GENDER	FABRIC	FEATURES	PRICES
<b>ATOMIC SWEATER</b>	AP5107910	480	Anthracite	S	Men	Molleton (63% Cotton, 33% Polyester, 4% Elastane)	Atomic Flag Label, 3D Print, Casual Fit	
	AP5107920		Maroon	M L XL 2XL				
<b>W ATOMIC SWEATER</b>	AP5107610	430	Anthracite	XS	Women	Molleton (63% Cotton, 33% Polyester, 4% Elastane)	Atomic Flag Label, 3D Print, Casual Fit	
	AP5107620		Maroon	S M L				

### RACE LINE



AL5109230  
**RACING BEANIE** **NEW**  
CARROT / RED / MAROON



AL5109240  
**RACING BEANIE** **NEW**  
COBALT BLUE / ELECTRIC BLUE / DARK DENIM



AL5109120  
**RACING CAP**  
RED



AL5109110  
**RACING CAP**  
BLACK



AL5108530  
**ALPS KIDS BEANIE** **NEW**  
COBALT BLUE / ELECTRIC BLUE / DARK DENIM



AL5108550  
**ALPS KIDS BEANIE** **NEW**  
DUSTY ROSE / WHITE / MAROON

PRODUCT	ART. NO.	COLOR	WEIGHT (g)	SIZES	GENDER	FABRIC	FEATURES	PRICES
<b>RACING BEANIE</b>	AL5109230	Carrot / Red / Maroon	90	One size fits all	Unisex	Fleece Earband 100% Polyester, 50% Wool, 50% Acrylic, 100% Acrylic	Atomic Label Branding, Racing Flag Label, Heather Effect, Fleece Earband	
	AL5109240	Cobalt Blue / Electric Blue / Dark Denim						
<b>RACING CAP</b>	AL5109120	Red	90	One size fits all	Unisex	100% Polyester, 100% Cotton Canvas, 194g/m <sup>2</sup>	3D Embroidery Branding, Racing Flag Label, Wicking Sweatband, Strapback	
	AL5109110	Black						
<b>ALPS KIDS BEANIE</b>	AL5108530	Cobalt Blue / Electric Blue / Dark Denim	80	One size fits all	Junior	Fleece Earband 100% Polyester, 50% Wool, 50% Acrylic, 100% Acrylic	Atomic Label Branding, Fleece Earband	
	AL5108550	Dusty Rose / White / Maroon						

## FIS RULES 2022/23 (EQUIPMENT RULES)

DISCIPLINE	GENDER	SKI LENGTH (MINIMUM) SKI LENGTH MEASUREMENT TOLERANCE OF +/- 1 CM	RADIUS (MINIMUM)	PROFILE WIDTH UNDER BINDING	PROFILE WIDTH IN FRONT OF BINDING	MAXIMUM STAND HEIGHT (SKI/PLATE/BINDING)
------------	--------	---	---------------------	--------------------------------	---	--

### WC / EC / COC / FIS MEN AND WOMEN

<b>DH</b>	<b>MEN</b>	218 cm**	50 m***	<= 65 mm	<= 95 mm	50 mm
<b>DH</b>	<b>WOMEN</b>	210 cm**	50 m***	<= 65 mm	<= 95 mm	50 mm
<b>SG</b>	<b>MEN</b>	210 cm**	45 m	<= 65 mm	<= 95 mm	50 mm
<b>SG</b>	<b>WOMEN</b>	205 cm**	40 m	<= 65 mm	<= 95 mm	50 mm
<b>GS</b>	<b>MEN</b>	193 cm**	30 m	<= 65 mm	<= 103 mm	50 mm
<b>GS</b>	<b>WOMEN</b>	188 cm**	30 m	<= 65 mm	<= 103 mm	50 mm

<b>SL</b>	<b>MEN</b>	165 cm*		>= 63 mm		50 mm
<b>SL</b>	<b>WOMEN</b>	155 cm		>= 63 mm		50 mm

\*\* – 5 cm tolerance for FIS and ENL / \* – 10 cm tolerance for men U18 (Junior I) / \*\*\* Radius measurement for DH skis with a preparation tolerance of – 1 m

### U 14 (K1) + U 16 (K2)

<b>SG</b>	<b>U14 MEN / WOMEN</b>			<= 65 mm		50 mm
<b>SG</b>	<b>U16 MEN / WOMEN</b>	>= 183 cm	30 m	<= 65 mm		50 mm
<b>GS</b>	<b>U14 MEN / WOMEN</b>	<= 188 cm	17 m	<= 65 mm		50 mm
<b>GS</b>	<b>U16 MEN / WOMEN</b>	<= 188 cm	17 m	<= 65 mm		50 mm

<b>SL</b>	<b>U14 MEN / WOMEN</b>	>= 130 cm				50 mm
<b>SL</b>	<b>U16 MEN / WOMEN</b>	>= 130 cm				50 mm

>= minimum / <= maximum

### MASTERS

<b>SG</b>	<b>MEN</b>	185 cm*				50 mm
<b>SG</b>	<b>WOMEN</b>	180 cm*				50 mm
GS skis are allowed!						
<b>GS</b>	<b>MEN</b>	185 cm**				50 mm
<b>GS</b>	<b>WOMEN</b>	180 cm**				50 mm

<b>SL</b>	<b>MEN</b>					50 mm
<b>SL</b>	<b>WOMEN</b>					50 mm

\* no tolerance / \*\* – 5cm tolerance

For masters athletes the ski length is a recommendation (except SG)! No restrictions regarding length, width and radius for women above 55 and men above 65!

The FIS recommendations and rules for ski length, radius and profile width can be found in the current FIS Specifications for Competition Equipment! ([www.fis-ski.com](http://www.fis-ski.com))

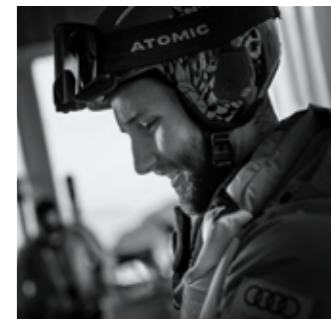
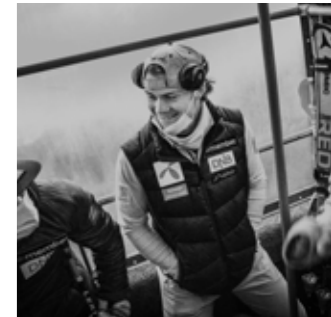
## REDSTER FIS USER RECOMMENDATIONS 2022 (SKI, BINDING, BOOT)

Ski selection of FIS products, both length and model, will be always very individual and a subjective decision. We noticed some common trends and following chart should help you to make the right decisions. The optimal skis FIS model and length is determined by the ability, the weight and also the strength of the user.

AGE	WEIGHT (kg)	WEIGHT (lbs)	SLALOM	LENGTH (cm)	BINDING	GIANT SLALOM	LENGTH (cm)	BINDING	BOOT
U8 AGES 6 - 7	18 - 23	40 - 50	REDSTER J9 FIS J-RP <sup>2</sup>	116	COLT 7 C	REDSTER J9 FIS J-RP <sup>2</sup> REDSTER G9 FIS J-RP <sup>2</sup>	116 / 124	COLT 7 C	JR 40
	23 - 27	50 - 60	REDSTER S9 FIS J-RP <sup>2</sup>	124	COLT 7 C	REDSTER G9 FIS J-RP <sup>2</sup>	124 / 131	COLT 7 C	JR 40 / JR 60 RS
	27 - 32	60 - 70	REDSTER S9 FIS J-RP <sup>2</sup>	124	COLT 7 C	REDSTER G9 FIS J-RP <sup>2</sup>	124 / 131	COLT 7 C	JR 60 RS
U10 AGES 8 - 9	32 - 36	70 - 80	REDSTER S9 FIS J-RP <sup>2</sup>	124 / 131	COLT 7 C	REDSTER G9 FIS J-RP <sup>2</sup>	131 / 138	COLT 7 C, COLT 10	JR 40
	36 - 41	80 - 90	REDSTER S9 FIS J-RP <sup>2</sup>	131 / 138	COLT 7 C, COLT 10	REDSTER G9 FIS J-RP <sup>2</sup>	138 / 145	COLT 10	JR 40 / JR 60 RS
	41 - 45	90 - 100	REDSTER S9 FIS J-RP <sup>2</sup>	138 / 145	COLT 10	REDSTER G9 FIS J-RP <sup>2</sup>	145 / 152	COLT 10	JR 60 RS
U12 AGES 10 - 11	32 - 36	70 - 80	REDSTER S9 FIS J-RP <sup>2</sup>	131	COLT 7 C, COLT 10	REDSTER G9 FIS J-RP <sup>2</sup>	131 / 138	COLT 10	JR 60 RS
	36 - 41	80 - 90	REDSTER S9 FIS J-RP <sup>2</sup>	131 / 138	COLT 7 C, COLT 10	REDSTER G9 FIS J-RP <sup>2</sup>	138 / 145	COLT 10	STI 70
	41 - 45	90 - 100	REDSTER S9 FIS J-RP <sup>2</sup>	138 / 145	COLT 10	REDSTER G9 FIS REVOSHOCK J-RP <sup>2</sup> REDSTER G9 FIS REVOSHOCK J	145 / 152	COLT 10, X 12 GW	STI 70
	45 - 50	100 - 110	REDSTER S9 FIS J-RP <sup>2</sup>	145 / 152	COLT 10, COLT 12	REDSTER G9 FIS REVOSHOCK J-RP <sup>2</sup> REDSTER G9 REVOSHOCK J	159 / 166	COLT 10, COLT 12, X 12 GW	STI 90
	50 - 54	110 - 120	REDSTER S9 FIS J	145 / 152	X 12 GW	REDSTER G9 FIS REVOSHOCK J-RP <sup>2</sup> REDSTER G9 REVOSHOCK J	159 / 166	COLT 10, COLT 12, X 12 GW	STI 110
U14 AGES 12 - 13	32 - 36	70 - 80	REDSTER S9 FIS J-RP <sup>2</sup>	131	COLT 7 C, COLT 10	REDSTER G9 FIS J-RP <sup>2</sup>	131 / 138	COLT 10	JR 60 RS
	36 - 41	80 - 90	REDSTER S9 FIS J-RP <sup>2</sup>	131 / 138	COLT 7 C, COLT 10	REDSTER G9 FIS J-RP <sup>2</sup>	138 / 145	COLT 10	STI 70
	41 - 45	90 - 100	REDSTER S9 FIS J-RP <sup>2</sup>	138 / 145	COLT 10	REDSTER G9 FIS REVOSHOCK J-RP <sup>2</sup> REDSTER G9 FIS REVOSHOCK J	145 / 152	COLT 10, X 12 GW	STI 70
	45 - 50	100 - 110	REDSTER S9 FIS J-RP <sup>2</sup>	145 / 152	COLT 10, COLT 12	REDSTER G9 FIS REVOSHOCK J-RP <sup>2</sup> REDSTER G9 REVOSHOCK J	159 / 166	COLT 10, COLT 12, X 12 GW	STI 90
	50 - 54	110 - 120	REDSTER S9 FIS J	145 / 152	X 12 GW	REDSTER G9 FIS REVOSHOCK J-RP <sup>2</sup> REDSTER G9 REVOSHOCK J	159 / 166	COLT 10, COLT 12, X 12 GW	STI 110
U16 AGES 14 - 15	54 +	120 +	REDSTER S9 FIS J	152	X 12 GW, X 14 GW	REDSTER G9 FIS J-RP <sup>2</sup> REDSTER G9 FIS REVOSHOCK J	166	COLT 12, X 12 GW, X 14 GW	STI 110
	41 - 45	90 - 100	REDSTER S9 FIS J-RP <sup>2</sup> REDSTER S9 FIS J	138 / 145	COLT 10, COLT 12, X 12 GW, X 14 GW	REDSTER G9 FIS J-RP <sup>2</sup> REDSTER G9 REVOSHOCK J	152 / 159	COLT 10, COLT 12, X 12 GW, X 14 GW	STI 70
	45 - 50	100 - 110	REDSTER S9 FIS J-RP <sup>2</sup> REDSTER S9 FIS J	145 / 152	COLT 12, X 12 GW, X 14 GW	REDSTER G9 FIS J-RP <sup>2</sup> REDSTER G9 REVOSHOCK J	159 / 166	COLT 12, X 12 GW, X 14 GW	STI 70 / STI 90
	50 - 54	110 - 120	REDSTER S9 FIS J REDSTER S9 FIS	152 / 155	X 12 GW, X 14 GW, X 12 VAR	REDSTER G9 FIS J-RP <sup>2</sup> REDSTER G9 REVOSHOCK J	166	COLT 12, X 12 GW, X 14 GW	STI 110 / TI 110
	54 - 59	120 - 130	REDSTER S9 FIS J REDSTER S9 FIS	152 / 155	X 12 GW, X 14 GW, X 12 VAR	REDSTER G9 FIS REVOSHOCK	173	X 12 VAR	STI 110 / TI 110
FIS WOMEN AGES 16 + UP	59 - 68	130 - 150	REDSTER S9 FIS REDSTER S9 FIS W	155 / 157	X 12 VAR, X 16 VAR	REDSTER G9 FIS REVOSHOCK	173 / 180	X 12 VAR, X 16 VAR	STI 130 / TI 130
	68 +	150	REDSTER S9 FIS W	157	X 16 VAR	REDSTER G9 FIS REVOSHOCK	180 / 187	X 16 VAR	STI 130 / TI 130
	50 - 54	110 - 120	REDSTER S9 FIS W	157	X 16 VAR	REDSTER G9 FIS REVOSHOCK W	WC/EC 188, FIS 183	X 16 VAR	STI 110
	54 - 59	120 - 130	REDSTER S9 FIS W	157	X 16 VAR	REDSTER G9 FIS REVOSHOCK W	WC/EC 188, FIS 183	X 16 VAR	STI 110
	59 - 64	130 - 140	REDSTER S9 FIS W	157	X 16 VAR	REDSTER G9 FIS REVOSHOCK W	WC/EC 188, FIS 183	X 16 VAR	STI 110 / STI 130
FIS MEN AGES 16 + UP	64 - 69	140 - 150	REDSTER S9 FIS W	157	X 16 VAR, ICON 24	REDSTER G9 FIS REVOSHOCK W	WC/EC 188, FIS 183	X 16 VAR, ICON 24	STI 130
	69 - 73	150 - 160	REDSTER S9 FIS W	157	X 16 VAR, ICON 24	REDSTER G9 FIS REVOSHOCK W	WC/EC 188, FIS 183	X 16 VAR, ICON 24	STI 130 / STI 150
	73 +	160 +	REDSTER S9 FIS W	157	X 16 VAR, ICON 24	REDSTER G9 FIS REVOSHOCK W	WC/EC 188, FIS 183	X 16 VAR, ICON 24	STI 150
	54 - 59	120 - 130	REDSTER S9 FIS M	165	X 16 VAR	REDSTER G9 FIS REVOSHOCK M REDSTER G9 FIS REVOSHOCK W	WC/EC 193, FIS 188	X 16 VAR	TI 110
	59 - 64	130 - 140	REDSTER S9 FIS M	165	X 16 VAR, X 19 MOD	REDSTER G9 FIS REVOSHOCK M REDSTER G9 FIS REVOSHOCK W	WC/EC 193, FIS 188	X 19 VAR, X 19 MOD	TI 110 / TI 130
FIS MEN AGES 16 + UP	64 - 69	140 - 150	REDSTER S9 FIS M	165	X 16 VAR, X 19 MOD, ICON 24	REDSTER G9 FIS REVOSHOCK M REDSTER G9 FIS REVOSHOCK W	WC/EC 193, FIS 188	X 16 VAR, X 19 MOD, ICON 24	TI 130
	69 - 73	150 - 160	REDSTER S9 FIS M	165	X 16 VAR, X 19 MOD, ICON 24	REDSTER G9 FIS REVOSHOCK M REDSTER G9 FIS REVOSHOCK W	WC/EC 193, FIS 188	X 16 VAR, X 19 MOD, ICON 24	TI 150
	73 - 77	160 - 170	REDSTER S9 FIS M	165	X 16 VAR, X 19 MOD, ICON 24	REDSTER G9 FIS REVOSHOCK M REDSTER G9 FIS REVOSHOCK W	WC/EC 193, FIS 188	X 16 VAR, X 19 MOD, ICON 24	TI 150
	77 +	170 +	REDSTER S9 FIS M	165	X 16 VAR, X 19 MOD, ICON 24	REDSTER G9 FIS REVOSHOCK M REDSTER G9 FIS REVOSHOCK W	WC/EC 193, FIS 188	X 16 VAR, X 19 MOD, ICON 24	TI 150 / TI 170



# BORN ON THE RACE COURSE



# ATOMIC PRO CENTER

## ATOMIC PRO CENTER ALTENMARKT

Atomic Strasse 1  
5541 Altenmarkt im Pongau  
Austria  
Tel. +43 6452 3900 177  
procenter@atomic.com  
www.atomic.com/en/  
atomicprocenter

## ATOMIC PRO CENTER OSLO

Snofonna 1  
1470 Lørenskog  
Norway  
Tel. +47 919 21 901  
procenter.oslo@atomic.com  
www.atomic.com/en-no/  
atomicprocenter

## EQUIPION – ATOMIC PRO CENTER

Leningradsky Ave 36  
125167 Moskva  
Russia  
Tel. +7 916 0032397  
equipion@amersports.com  
www.equipion.ru

# ATOMIC PRO CENTER PARTNER

## A U S T R I A

### BRÜNDL SPORTS

Nikolaus-Gassner-Straße 4  
5710 Kaprun  
Austria  
Tel. +43 6547 83880  
office@bruendl.at  
www.bruendl.at

### INSIDER SPORTSHOP TUX

Vorderlanersbach 83  
6293 Tux  
Austria  
Tel. +43 5287 86109  
info@insider-sportshop.com  
www.insider-sportshop.com

### INTERSPORT SCHNEIDER

Wagnergasse 4  
5541 Altenmarkt im Pongau  
Austria  
Tel. +43 6452 5479  
info@intersport-schneider.at  
www.intersportrent.at

### SPORT FACTORY

Widmoosweg 3  
5602 Wagrain  
Austria  
Tel. +43 6413 7365  
info@sport-factory.com  
www.sport-factory.com

### SPORT H & N

Dorf 35a  
6235 Reith im Alpbachtal  
Austria  
Tel. +43 5337 63260  
sport-hun@sport-hun.at  
www.sport-hun.at

## C A N A D A

### SQUIRE JOHN'S

209896 Highway 26 West  
The Blue Mountains  
ON L9Y 0L1  
Canada  
Tel. +1 705-445-1130  
info@squirejohns.com  
www.squirejohns.com

## G E R M A N Y

### INTERSPORT SKI-HIRT

Titiseestraße 28  
79822 Titisee-Neustadt  
Germany  
Tel. +49 7651 92280  
egon.hirt@ski-hirt.de  
www.ski-hirt.de

### INTERSPORT SKIHÜTTE

Tiroler Straße 2  
83242 Reit  
Germany  
Tel. +49 8640 7969290  
www.skihuette.net

## I T A L Y

### ORNELLO SPORT S.N.C

Piazza XX Settembre, 10  
46041 Asola MN  
Italy  
Tel. +39 0376 710234  
info@ornellosport.com  
www.ornellosport.com

### ROSSINI SPORT

Via Comasina, 7  
20843 Verano Brianza MB  
Italy  
Tel. +39 0362 900912  
info@rossinisport.it  
www.rossinisport.it

### SPITALER SPORTS

Via Pillhof, 47  
39057 Eppan  
BZ  
Italy  
Tel. +39 0471 205104  
www.spitalersports.com

### TECHNOSPORT S.R.L.

Frazione Plan Felinaz, 19  
11020 Plan Felinaz AO  
Italy  
Tel. +39 0165 32829  
technosport.vda@gmail.com  
www.technosport.vda.it

## J A P A N

### DOING AMS

2-2-6-1 Minami-ku, Terabetōri  
Aichi Nagoya, 457-0072  
Japan  
Tel. +81 52-217-9634  
www.ams-doing.com

### KANDAHAR MACHIDA SHOP

5-9-15 Haramachida  
Machida City  
Tokyo 194-0013  
Japan  
Tel. +81 42-732-7877  
www.kandahar.co.jp

### MT ICI KANDA COMPE SHOP

1-6-1 Jinbouchyo  
Chiyoda-KU  
TOKYO 010-0051  
Japan  
Tel. +81 3-3295-6060  
www.ici-sports.com

### MT ICI MORIOKA SHOP

Moss Bill 2F 2-8-14 Morioka  
Morioka City  
Iwate 020-0022  
Japan  
Tel. +81 19-626-2122  
www.ici-sports.com

### MT ICI UTSUNOMIYA

3 Chome-9-23 Nakaimaizumi  
Utsunomiya  
Tochigi 321-0968  
Japan  
Tel. +81 28-639-9650  
www.ici-sports.com

### TANABE SPORTS

5-4 Sumiyoshi Matsuyamachi  
Chuo-KU  
Osaka City 540-0017  
Japan  
Tel. +81 6-6763-3901  
www.tanabesports.jp

## N E T H E R L A N D S

### DAKA SSC

Langestraat 111-115  
3811 AD Amersfoort  
Netherlands  
Tel. +31613691044  
www.daka.nl/filiaal/en/amersfoort

## S L O V E N I A

### KOALA

Ulica Antona Tomšiča 11  
1294 Višnja Gora  
Slovenia  
Tel. +386 41 721 888  
koala@koala.si  
www.koala.si

## S W E D E N

### ALPINGARAGET

Birger Jarlsgatan 127  
113 56 Stockholm  
Sweden  
Tel. +46 8 16 50 10  
web@alpingaraget.se  
www.alpingaraget.se

## S W I T Z E R L A N D

### POLLUX SPORT

Rudenz 32  
3860 Meiringen  
Switzerland  
Tel. +41 33 971 43 18  
fahner@pollux-sport.ch  
www.pollux-sport.ch

### SPORT BAUMANN

Weissbadstrasse 4  
9050 Appenzell  
Switzerland  
Tel. +41 71 787 35 45  
info@sportbaumann.ch  
www.sport-baumann.ch

### SPORT SHOP

TIME OUT USTER  
Pfäffikerstrasse 30  
8610 Uster  
Switzerland  
Tel. +41 44 942 06 16  
mail@sportshop-timeout.ch  
www.sportshop-timeout.ch

### VAQUIN SPORTS & LOISIRS

Immeuble Mont-Calme  
1997 Haute-Nendaz  
Switzerland  
Tel. +41 27 565 87 54  
vaquin.sport@gmail.com  
www.atelierduskivaquin.ch

### VIRAGE SPORTS

Rte du téléphérique 5  
3967 Vercorin  
Switzerland  
Tel. +41 27 455 87 00  
info@virage.ch  
www.virage.ch

## U K

### SKI BARTLETT

Uxbridge Rd  
Uxbridge UB10 0NP  
United Kingdom  
Tel. +44 2088480040  
www.skibartlett.com

### SOLUTIONS 4 FEET

7 Market Square  
Bicester OX26 6AA  
United Kingdom  
Tel. +44 1869 244424  
www.solutions4feet.com

## U S A

### A RACERS EDGE

114 east Lincoln Avenue  
Breckenridge  
CO 80424  
USA  
Tel. +1 970-453-7600  
www.aracersedge.com

### RODGERS SKI AND SPORT

5 Railroad Street  
Lincoln  
NH 03251  
USA  
Tel. +1 603-745-8347  
www.rodgersskiandsport.com